

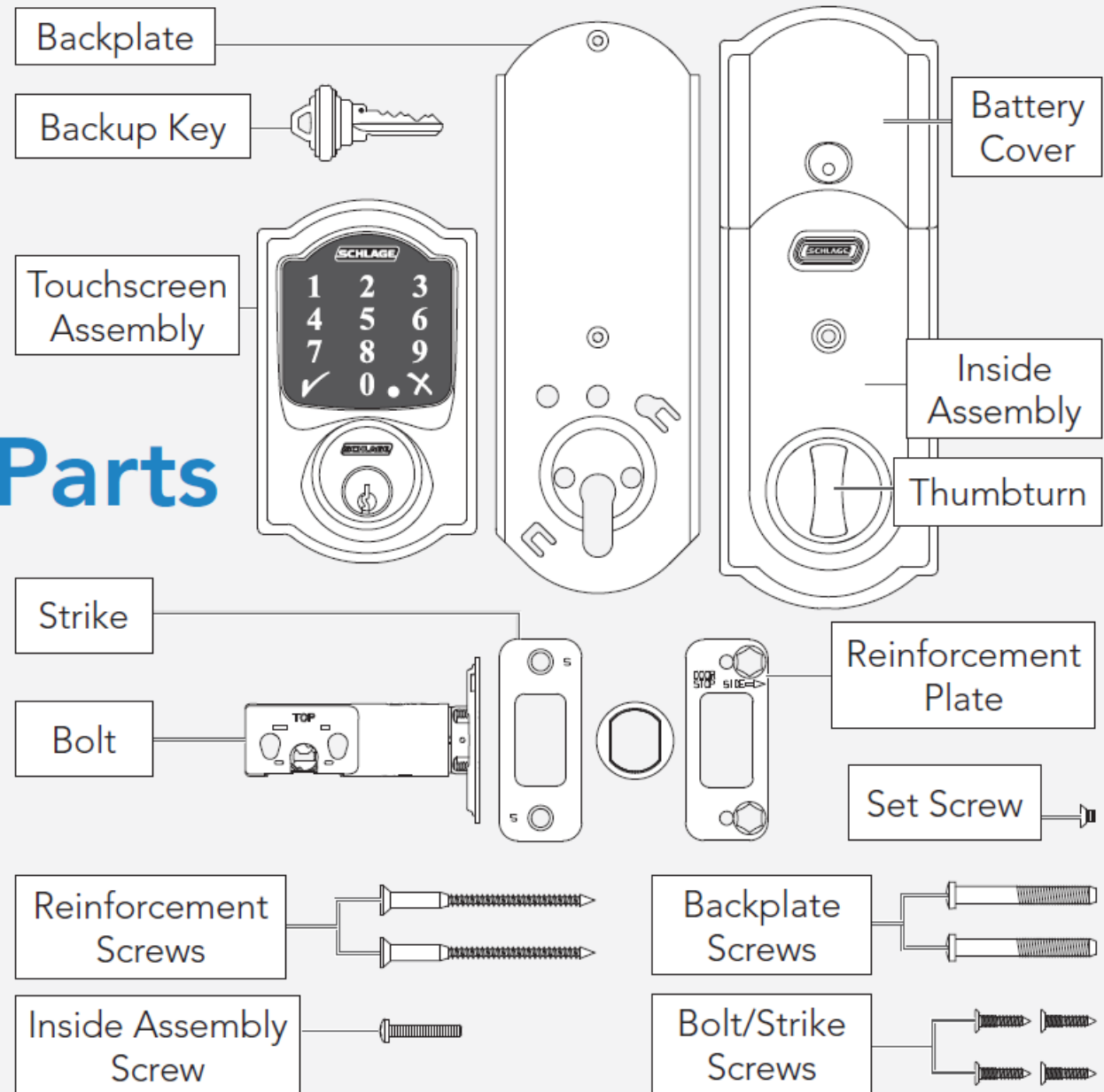


# Schlage **Connect**<sup>TM</sup>

SMART DEADBOLT

Quick Start Guide

# Parts



# Interactive experience

For an improved installation experience, follow the link below or scan the QR code for online interactive instructions, warranty, and reference information.

<https://instructions.allegion.com/instr/86/2110>



# Tools



Phillips screwdriver  
Don't use a power drill!

# Support



U.S.A.: 888-805-9837  
Canada: 800-900-4734  
Mexico: 018005067866

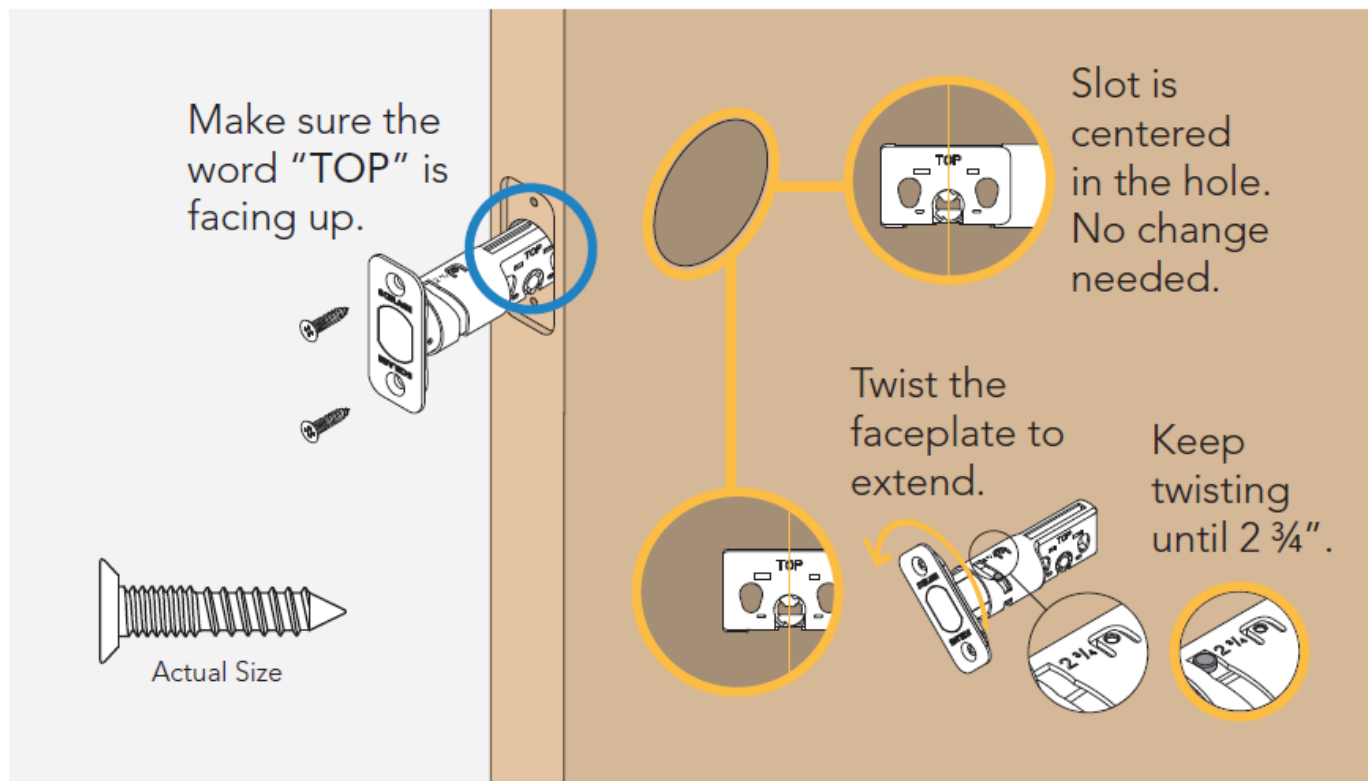
step  
**1**

## Need Help?

See "Help with Step 1" in the online instructions. The link is on the back cover or the third page of this guide.

## Install the bolt.

You may have to adjust your bolt length. Make sure the slot in the bolt is centered in the hole.



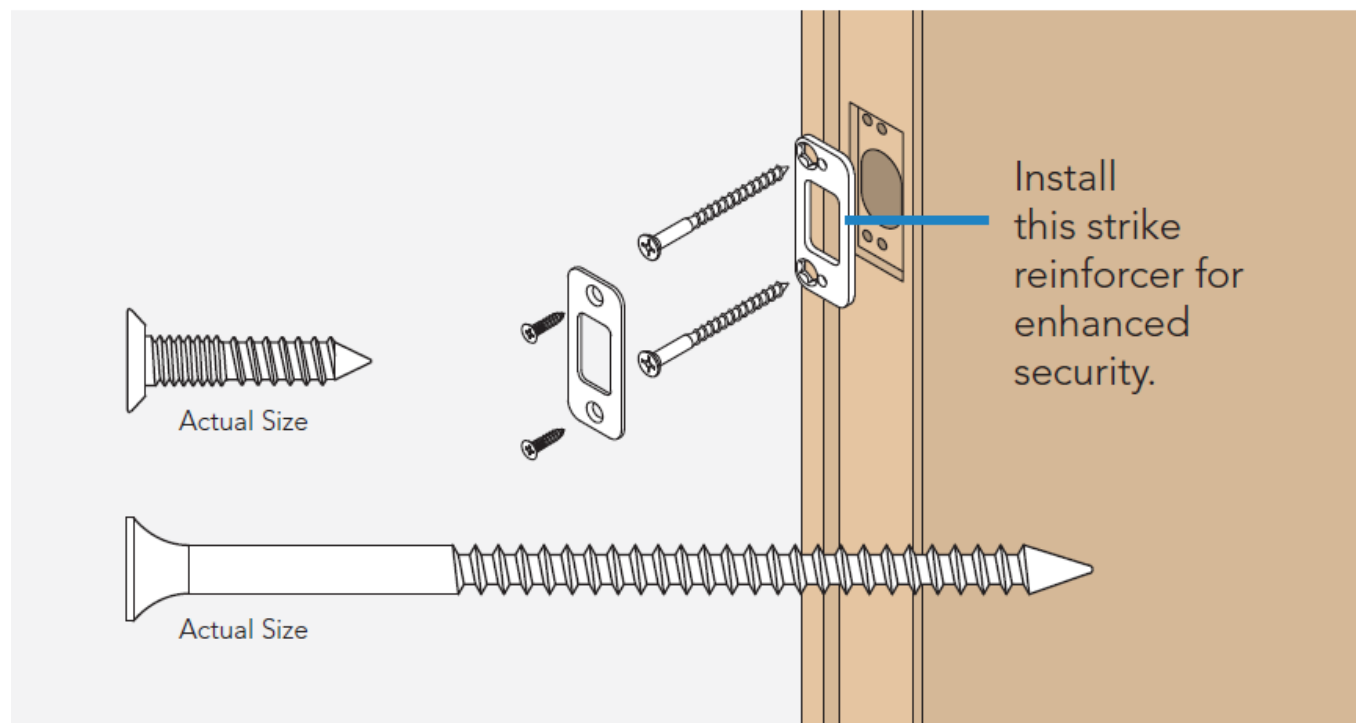
step  
**2**

### Need Help?

Trouble installing the strike reinforcer? See "Help with Step 2" in online instructions.

## Install the strike into the door frame.

If you have a window next to your door, you may not be able to use the longer wood screws to install the reinforcer.

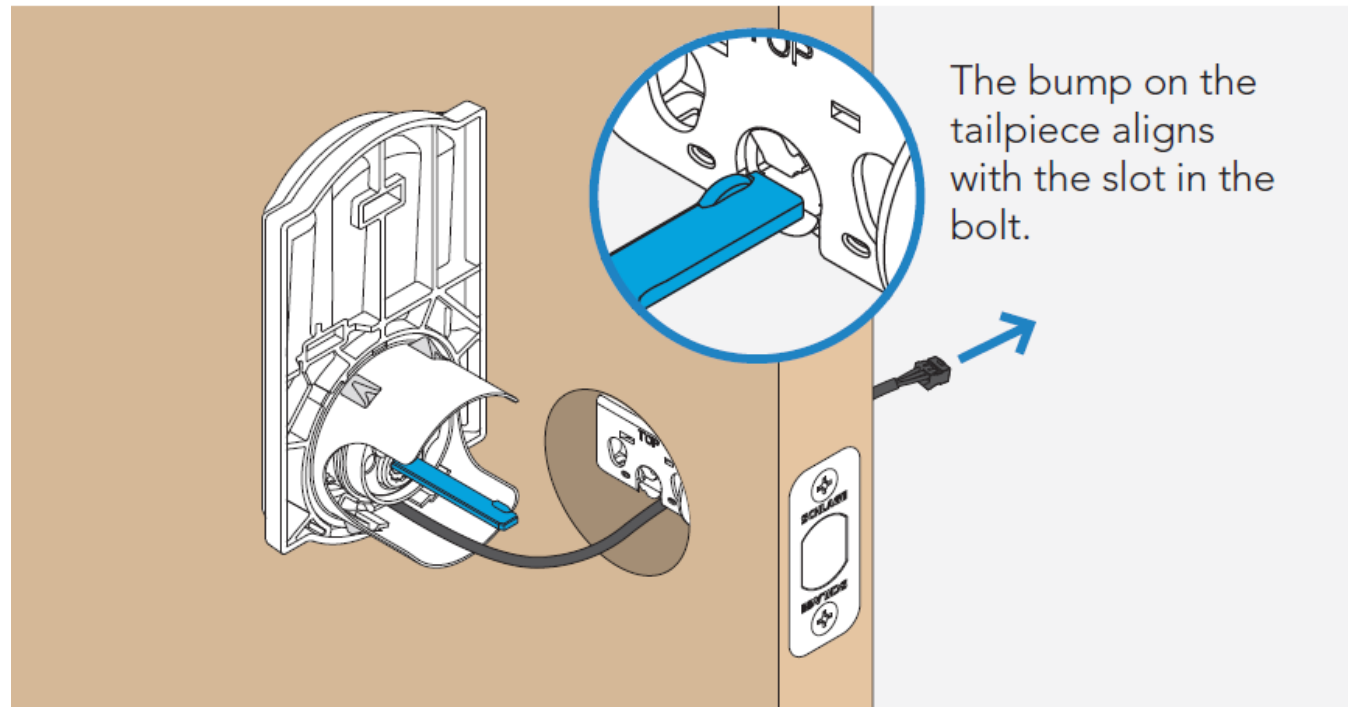


step  
**3**

Is it hard to install the touchscreen?  
Is the tailpiece not installing correctly?  
If the hole through your door seems too small, you may need to remove the spacer. See the online instructions.

## Install the touchscreen.

Route the cable through the door **BELOW** the bolt. Align the tailpiece as shown and push the touchscreen onto the door.



step  
**4**



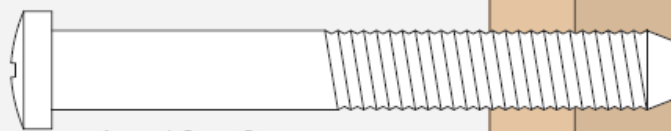
Phillips screwdriver

Don't use a power drill!

You may damage your lock!

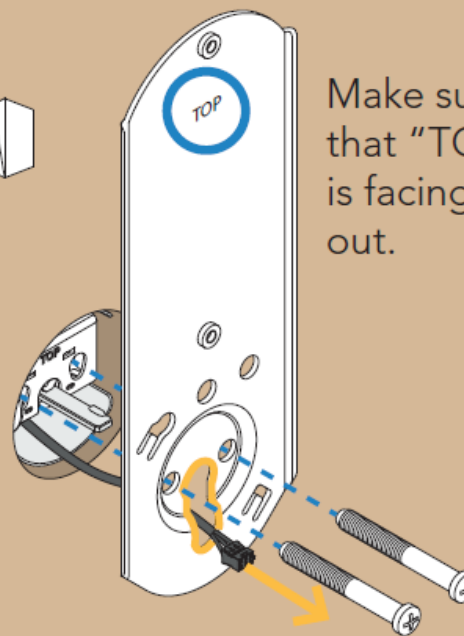
## Install the inside backplate.

Route the cable below the bolt and through the hole on the bottom of the backplate. Secure the backplate with screws.



Actual Size (2)

Hold the touchscreen  
on the outside of  
the door while you  
tighten the screws.

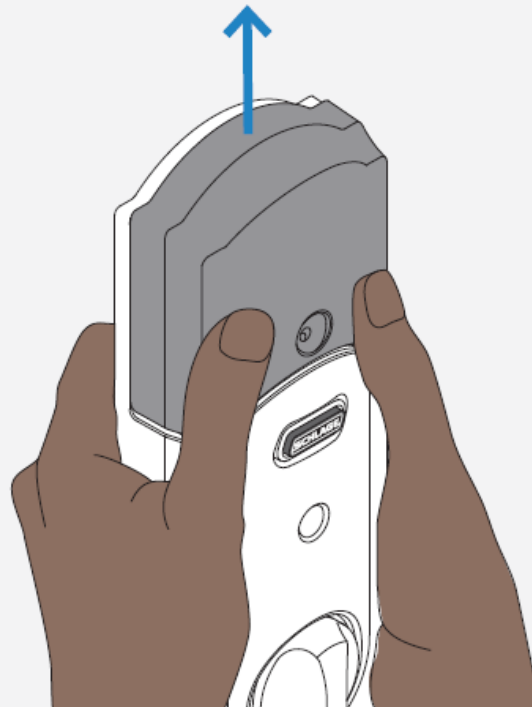


Make sure  
that "TOP"  
is facing  
out.



step  
**5**

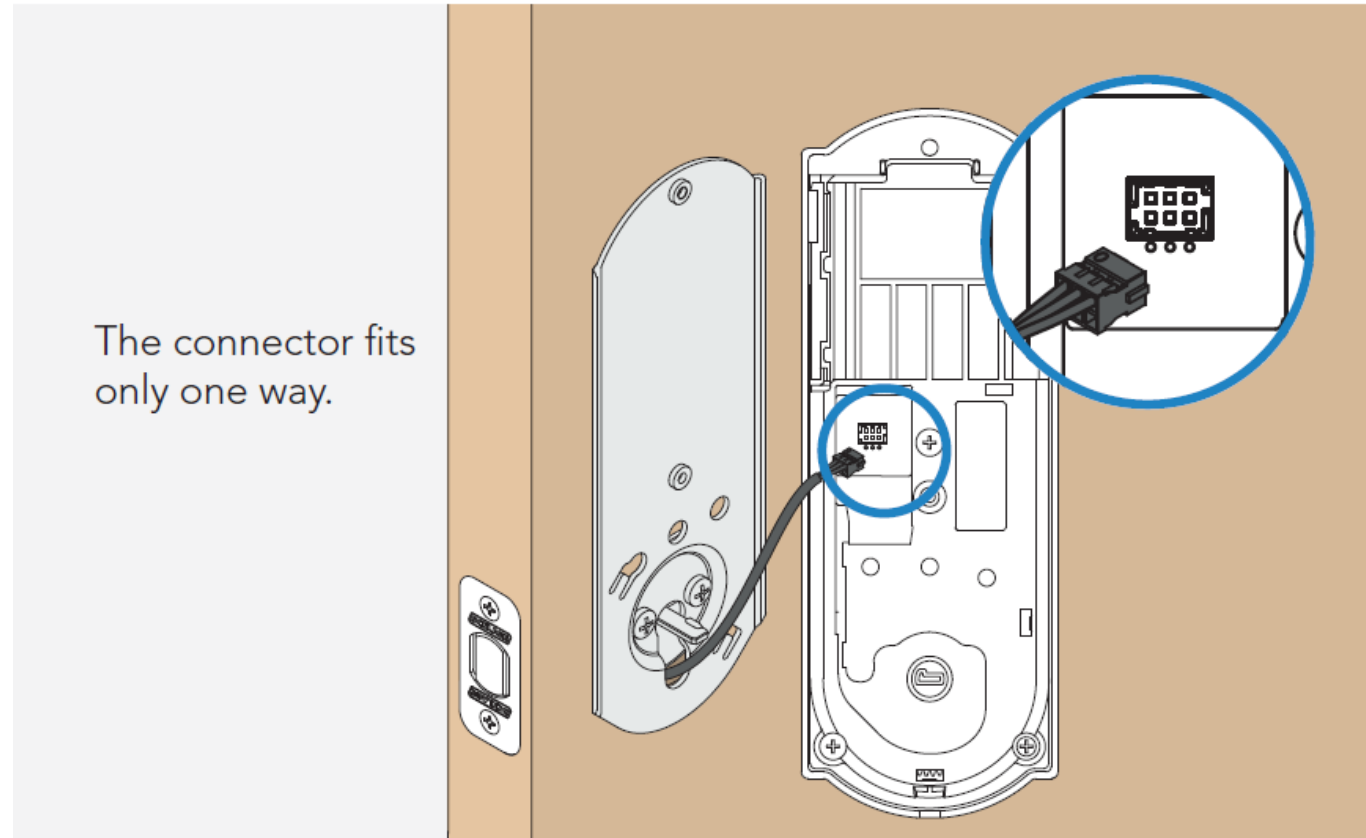
Take off the battery cover.



step  
**6**

Connect the cable.

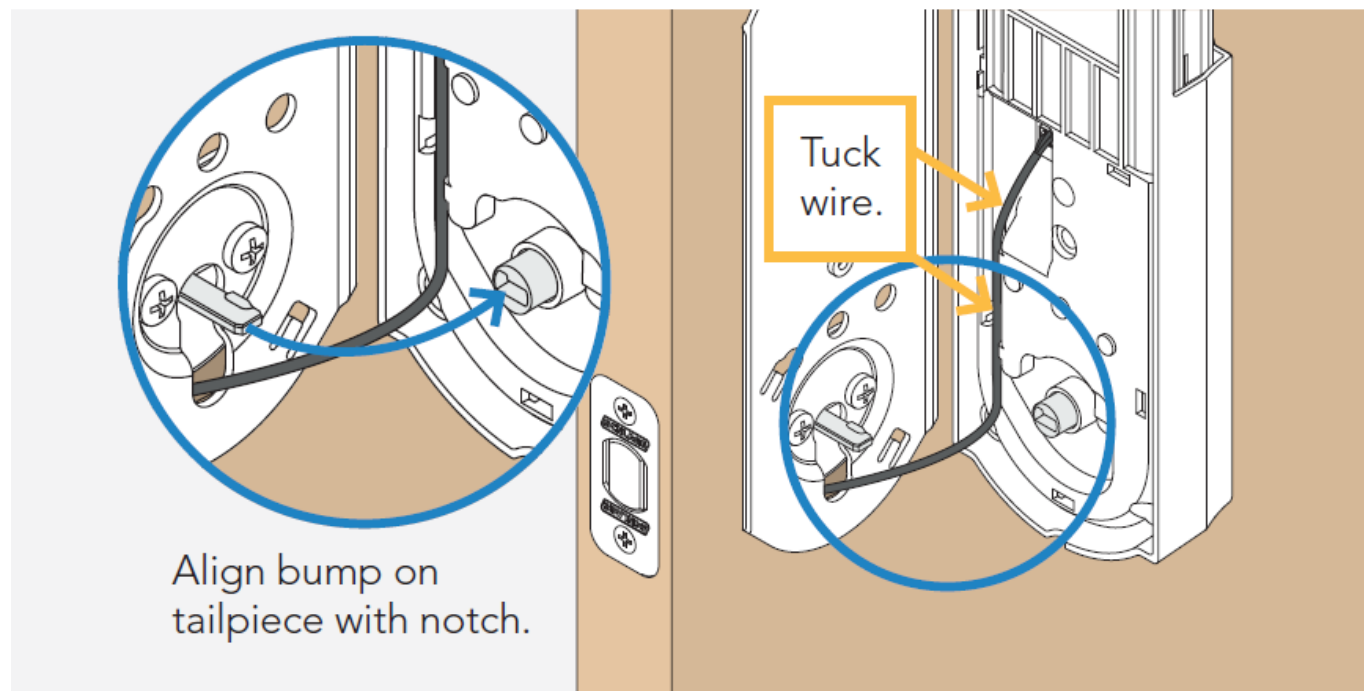
The connector fits  
only one way.



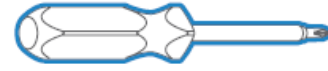
step  
**7**

## Secure the lock to the door.

If the bump on the tailpiece doesn't align with the slot in the back of the inside assembly, make sure your thumbturn is vertical (up and down). Tuck the wire into the channel.



step  
**8**



Phillips screwdriver  
Don't use a power drill!  
You may damage your lock!

Install the screws.

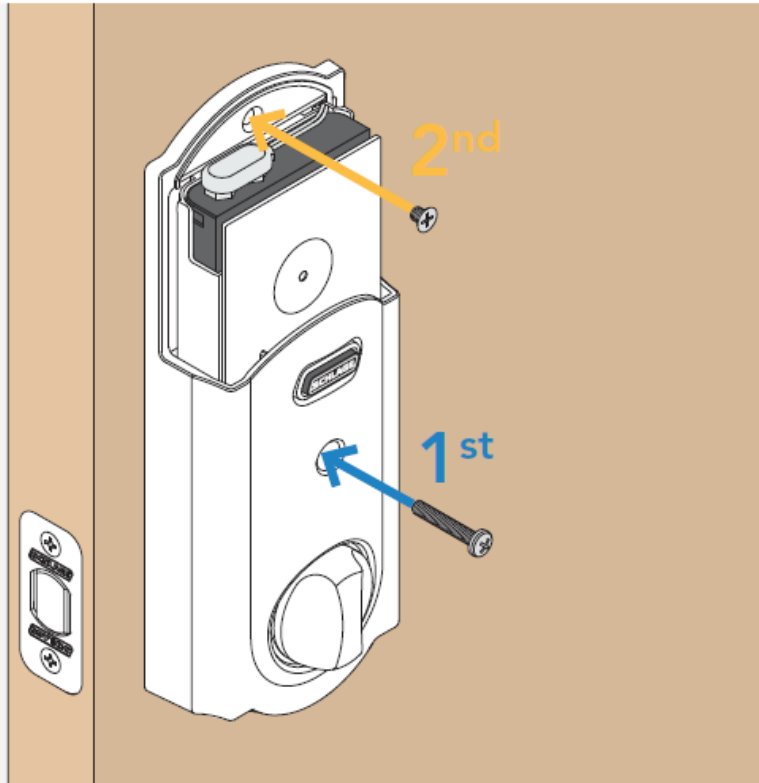
Install the lower screw first.



Actual Size

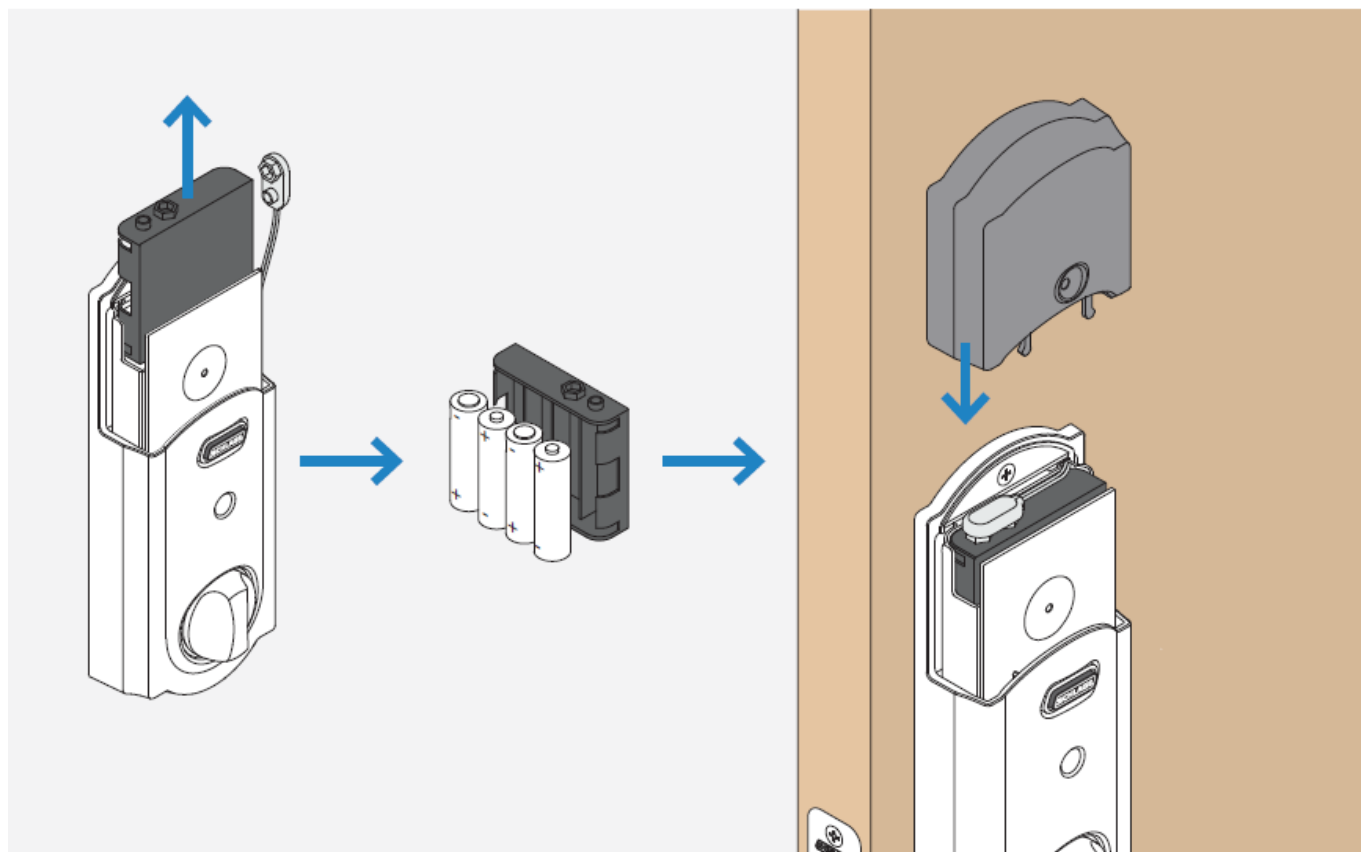


Actual Size



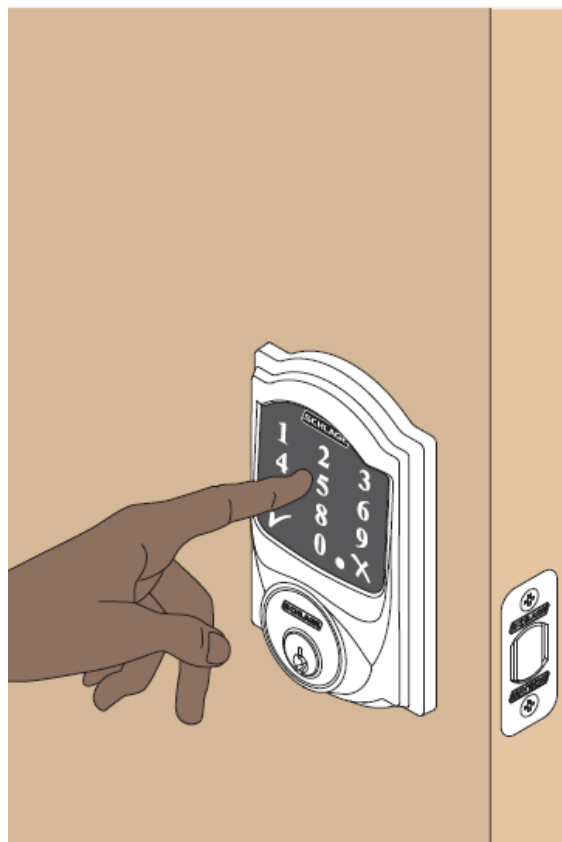
step  
9

Install batteries and slide the cover on.



step  
**10**

Set up your lock.



1. Open your door!
2. Enter one of the two default user codes.  
The codes are located on the back of this guide and on the back of the inside assembly. You need to remove the inside assembly to see the label.
3. Your lock will enter a setup routine.

When the bolt stops moving, setup is complete.

step  
**11**

Need Help?

If the bolt doesn't extend or retract during testing, see the online instructions and make sure spindle is aligned properly.

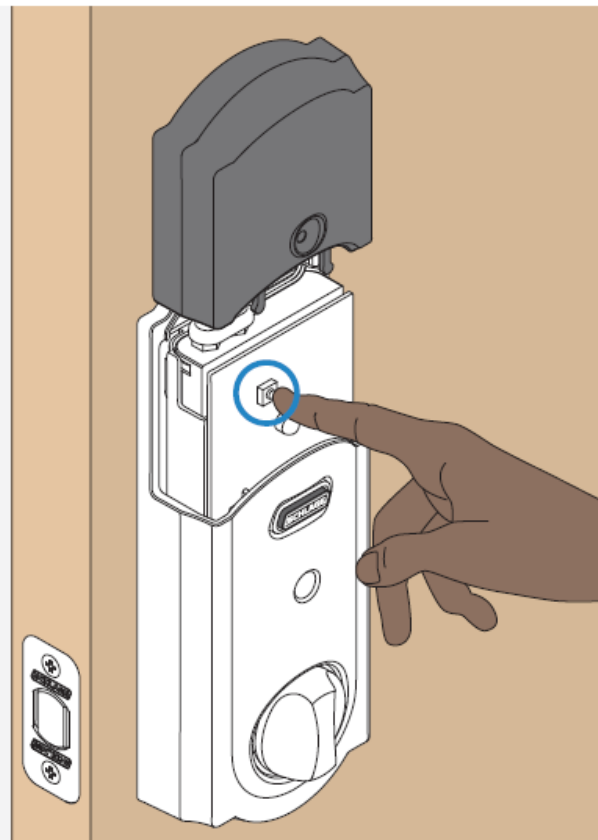
## Test your lock.

1. Close your door.
2. Extend and retract the bolt using the inside thumbturn.
3. Make sure the bolt retracts smoothly. If it doesn't your door and frame may not be aligned.
4. Open your door.
5. Extend the bolt using the inside thumbturn.
6. Now enter a user code at the touchscreen to check that the bolt retracts.

# step 12

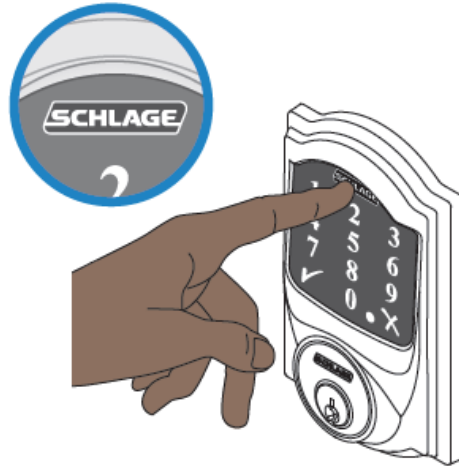
## Enroll your lock.

1. Place your smart home system or panel into enrollment mode (see documentation for that device for details).
2. Remove the battery cover.
3. Press then release button.
4. A yellow flashing light indicates enrollment is in progress.
5. A solid green light indicates successful enrollment.
  - ❗ A red light indicates an enrollment issue, try repeating steps 1-3.



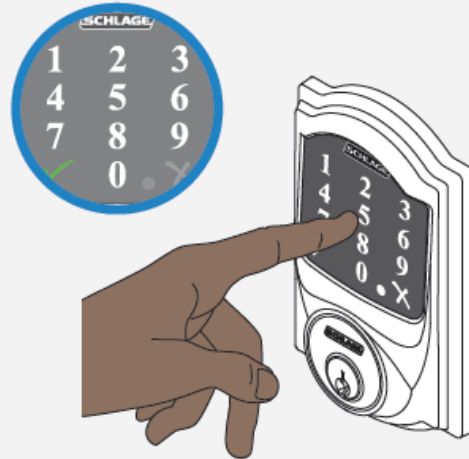


# Lock and unlock



To lock your door just tap the **SCHLAGE** logo.

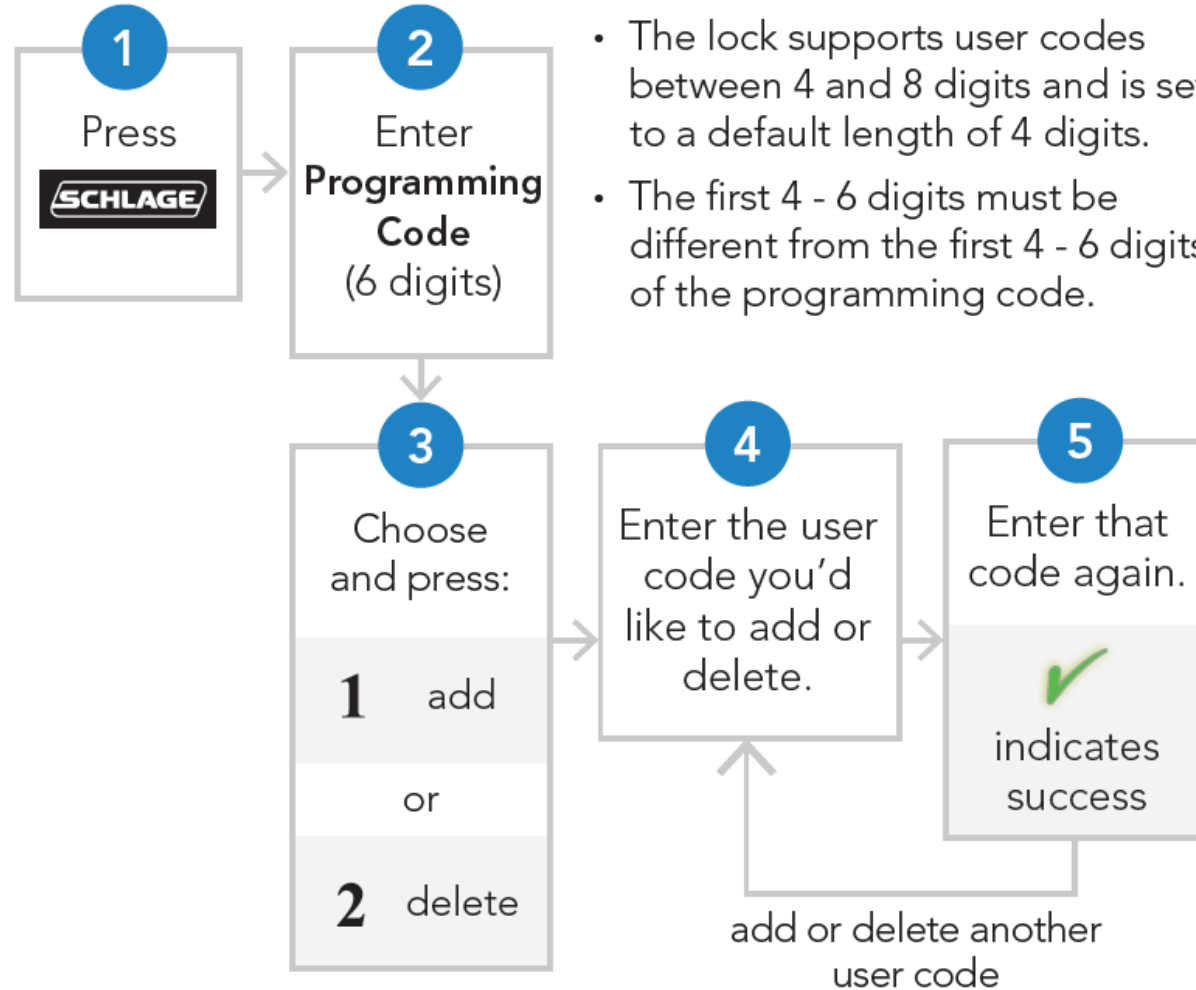
You can also lock your door by entering a user code while the door is closed or by turning the thumbturn toward the door edge.



To unlock your door enter a user code.

You can also unlock your door from inside by turning the thumbturn away from the door edge.

# Add and delete codes



# Save this guide!

PLACE LABEL  
HERE

PLACE LABEL  
HERE



Access step-by-step  
instructions and help.

[https://instructions.  
allegion.com/  
instr/86/2110](https://instructions.allegion.com/instr/86/2110)



**ALLEGION™**

© Allegion 2018  
Printed in U.S.A.  
P518-669 Rev. 06/18-b



P518-669

## Add your Connect Z-Wave Plus lock to a smart home system

Once your controller is in "Add" mode, press the button on the lock as shown below. If required, enter the 5 digit DSK Code to the controller app whenever it is requested.



A yellow light will flash, then turn green when your lock has been successfully added.

A red light indicates there was a problem adding your lock - try repeating the steps again.

## Information about DSK Codes

Some home automation systems require a 5 digit DSK Code to Add the lock.

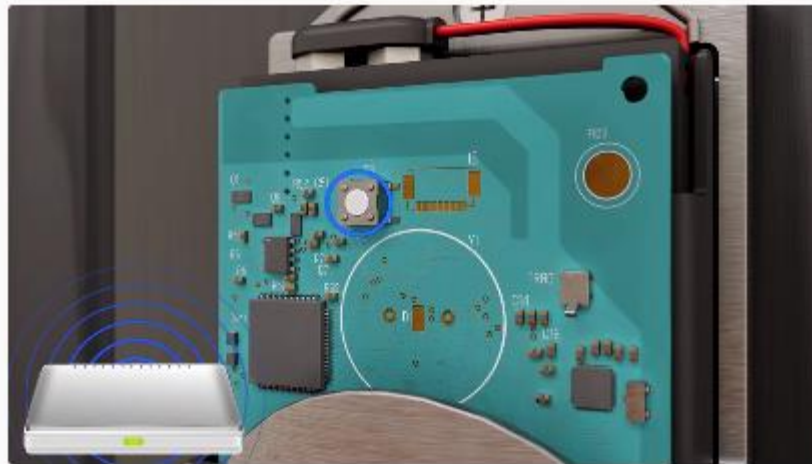
The DSK Code for your lock can be found on a label on the mounting plate or on the Quick Start Guide.



## Remove your Lock from a Smart Home system

First put your controller into "Remove" mode, then remove your Schlage Connect lock as shown below.

Remove the battery cover, then press the button (as shown below) to start the process.



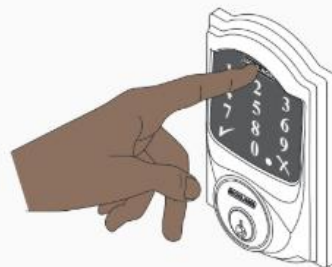
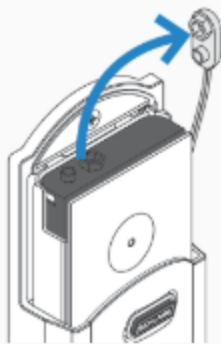
A yellow light will flash, then blink green 3 times when your lock has been successfully removed.

A red light indicates there was a problem removing your lock - try repeating the steps again.

## Factory Default Reset

If you have forgotten your programming code, you can restore the default codes. If you want to move the lock to a different door, you need to restore default settings. Move the lock to the new door, and then set it up again.

Use this procedure only when the network primary controller is missing or otherwise inoperable.



2

Press and hold down the **SCHLAGE** logo. While you are pushing the logo, reconnect your batteries.



3

Test your lock with one of your default codes, located on the back of this guide.

# Association Information

Association Group	Nodes	Commands
Group1  Lifeline	[1,2]	<ol style="list-style-type: none"><li>1. <b>Battery Report</b> – Every 24 Hrs. from power up for Normal Battery condition and on every Electronic Operation of the lock in Low Battery condition.</li><li>2. <b>Configuration Report</b> – Any Change in the Lock Configuration</li><li>3. <b>Device Reset Locally Report</b> – When the Lock is Factory Reset</li><li>4. <b>Notification Report</b>– On every Notification sent</li><li>5. <b>User Code Report</b> – Any User Code updates</li><li>6. <b>Door Lock Report</b> – On Lock operation</li></ol>