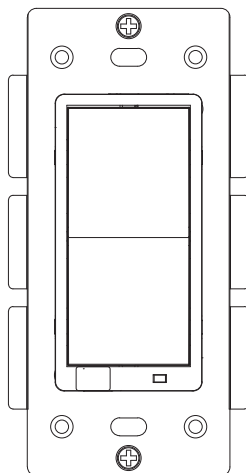


USER MANUAL

ZOOZ™
bright ideas

DIMMER SWITCH
ZEN22 VER. 2.0



FEATURES

- Manual or remote on/off and dimming control from your mobile device or computer (when included to a Z-Wave gateway hub)
- Direct 3-way Solution – works with regular 3-way switches
- 2 ramp rate options
- 500 chip for faster and safer wireless communication
- Works with LED, CFL, and incandescent bulbs
- Remembers and restores on/off status after power failure
- Supported by most Z-Wave gateway controllers
- Can be used in rules and scenes with other Z-Wave devices for advanced home automation
- Customizable LED indicator
- Air-gap switch for added safety
- Built-in Z-Wave signal repeater

WIRING: READ IT!

1. CHECK THE LOAD: lights only (500W for incandescent, 150W for LED's/CFL's), DON'T CONNECT THIS SWITCH TO FANS.

2. POWER OFF: turn the circuit power off in the breaker panel before you start.

3. CHECK THE WIRES: mark load (most often black), line (most often black), neutral (most often white), and ground (most often bare). 14AWG wires only! **Don't rely exclusively on your multimeter to identify the wires!**

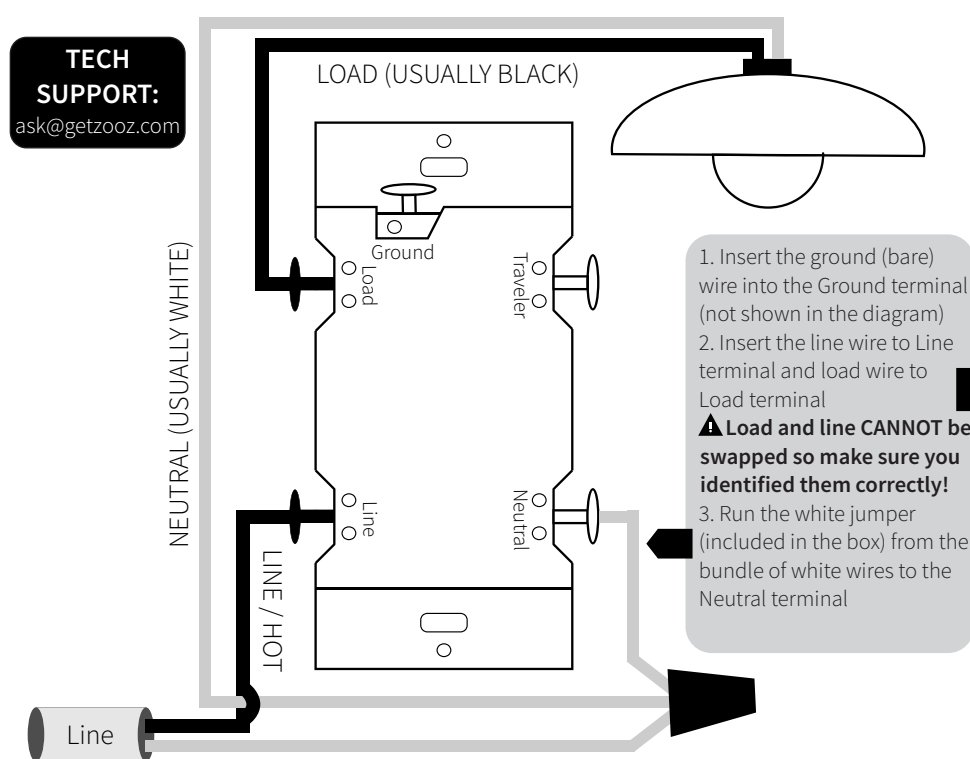
Not sure what you're seeing?
We'll help: support.getzooz.com

4. REMOVE THE OLD SWITCH: disconnect the wires and label them.

5. CONNECT THE Z-WAVE SWITCH: follow all installation steps carefully. Wire the switch EXACTLY like in the diagram.

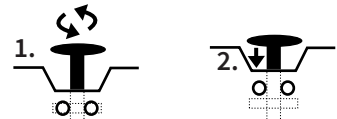
DIMMER SWITCH ZEN22 WIRING DIAGRAM FOR SINGLE POLE INSTALLATION

➔ TURN THE PAGE FOR 3-WAY DIAGRAMS AND INSTRUCTIONS ➔



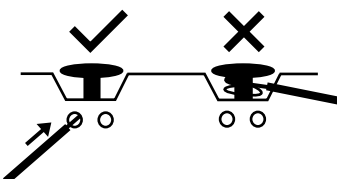
HOW TO INSTALL THE WIRES

1. UNSCREW: carefully turn the screw counter clockwise to make space for the wire. DO NOT unscrew completely.



2. PRESS DOWN: once it's loose, press the screw down with your finger so it catches the thread.

3. INSERT WIRE: make sure the wire is perfectly straight, then insert it to the terminal while holding the screw down. DO NOT wrap wires around the terminal screws!



4. TIGHTEN: turn the screw clockwise to tighten the wire. DO NOT OVERTIGHTEN!



This is an electrical device - please use caution when installing and operating the dimmer switch. Remote control of appliances may result in unintentional or automated activation of power.

Do not use this Z-Wave device to control electric heaters or other appliances which produce the risk of fire, burns, or electrical shock when unattended.

COMPLETE INSTALLATION

Secure your Z-Wave switch in the box with mounting screws, handling the wires with care.

For multi-gang-box installation, you may need to break the side tabs off with pliers to fit the switch next to the neighboring switches.

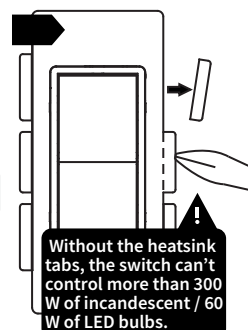
Install the wall plate and restore power to the circuit.

TEST THE SWITCH

Tap the upper paddle for ON and lower paddle for OFF.

If the test fails, please check that:

- power is fully restored to the circuit
- wiring matches the instructions **exactly**
- the type of load is approved and within the specs of this switch



Without the heatsink tabs, the switch can't control more than 300 W of incandescent / 60 W of LED bulbs.

⚠ WARNING

- This product should be installed indoors upon completion of any building renovations.
- Prior to installation, the device should be stored in a dry, dust-and-mold-proof place.
- Do not install the switch in a place with direct sun exposure, high temperature, or humidity.
- Keep away from chemicals, water, and dust.
- Ensure the device is never close to any heat source or open flame to prevent fire.
- Ensure the device is connected to an electric power source that does not exceed the maximum load power.
- No part of the device may be replaced or repaired by the user.

SPECIFICATIONS

- Model Number: ZEN22
- Z-Wave Signal Frequency: 908.42 MHz
- Power: 120 VAC, 60 Hz
- **Minimum Load:** 15W for LED and CFL bulbs
- **Maximum Loads:** 500W single, 400W with heat sink tabs broken off on one side, 300W with no heat sink tabs incandescent, 150W CFL or LED (60-110W without heat sink tabs)
- Range: Up to 100 feet line of sight between the Wireless Controller and the closest Z-Wave receiver module
- Operating Temperature: 32-104° F (0-40° C)
- Installation and Use: Indoor only

ask@getzooz.com
www.getzooz.com

Z-WAVE CONTROL



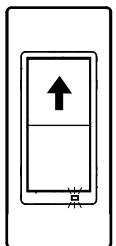
ADD DEVICE to your hub

Initiate inclusion (pairing) in the app (or web interface).

Finalize inclusion at the switch.

TAP 3 TIMES QUICKLY

The LED indicator will blink to signal communication and remain on for 2 seconds to confirm inclusion



TROUBLESHOOTING

The switch won't add to your system? Try this:

1. Initiate **EXCLUSION** and tap the lower paddle on the switch 3 times quickly
2. Tap the upper paddle **6-7 times** very quickly when adding it
3. Bring the gateway controller (hub) **closer** to the switch, it may be out of range

ASSOCIATION

Once this switch is added to your Z-Wave network, you are able to turn the device on or off and adjust brightness remotely from your mobile device, computer, or Z-Wave remote control. Depending on your Z-Wave gateway's home automation software capabilities, you may be able to associate your Zooz switch in groups with other Z-Wave devices to schedule scenes and create events.

This dimmer switch supports Group 1 with up to 5 devices for lifeline communication. This device will send MULTILEVEL REPORT to Group 1 when operated manually.

Please refer to your controller's user guide for advanced programming instructions as they are a little different for each software.

ADVANCED SETTINGS

If your Z-Wave hub's interface allows for advanced configuration and parameter adjustment, you will be able to change and save the settings below and customize the switch to serve your needs.

Paddle Control

Parameter 1: Choose if you want the upper paddle to turn the light on or turn the light off when tapped

Values: 0 – Upper paddle turns the light on, lower paddle turns the light off (default); 1 – Upper paddle turns the light off, lower paddle turns the light on

Size: 1 byte dec.

LED Indicator Control

Parameter 2: Choose if you want the LED indicator to turn on when the switch (light) is on or off

Values: 0 – LED indicator is on when switch is off, LED indicator is off when

switch is on (default); 1 – LED indicator is on when switch is on, LED indicator is off when switch is off

Size: 1 byte dec.

Enable / Disable LED Indicator

Parameter 3: Enable or disable the LED indicator completely so it stays off at all times

Values: 0 – LED indicator is enabled (default); 1 – LED indicator is disabled

Size: 1 byte dec.

Ramp Rate Control

Parameter 4: Choose from 2 ramp rate options (fade-in / fade-out effect for on / off operation)

Values: 0 – light turns on to 100% brightness within 2 seconds, turns off within 4 seconds (default); 1 – light turns on to 100% brightness instantly, turns off within 1 second

Size: 1 byte dec.

On Off Status After Power Failure

Parameter 5: Set the on off status for the switch after power failure.

Values: 0 – forced to OFF (regardless of state prior to power outage); forced to ON (regardless of state prior to power outage); 2 – remembers and restores on/off status after power failure (default)

Size: 1 byte dec.



This product can be included and operated in any Z-Wave network with other Z-Wave certified devices from other manufacturers and/or other applications. All non-battery operated nodes within the network will act as repeaters regardless of vendor to increase reliability of the network.



This is an UL certified device. UL, just like ETL, is a Nationally Recognized Testing Laboratory. The UL mark is proof of product compliance with North American safety standards.

WARRANTY

This product is covered under a 12-month limited warranty. To read the full warranty policy or file a warranty claim, please go to www.getzooz.com/warranty

IN NO EVENT SHALL ZOOZ OR ITS SUBSIDIARIES AND AFFILIATES BE LIABLE FOR ANY INDIRECT, INCIDENTAL, PUNITIVE, SPECIAL, OR CONSEQUENTIAL DAMAGES, OR DAMAGES FOR LOSS OF PROFITS, REVENUE, OR USE INCURRED BY CUSTOMER OR ANY THIRD PARTY, WHETHER IN AN ACTION IN CONTRACT, OR OTHERWISE EVEN IF ADVISED OF THE POSSIBILITY OF SUCH DAMAGES. ZOOZ'S LIABILITY AND CUSTOMER'S EXCLUSIVE REMEDY FOR ANY CAUSE OF ACTION ARISING IN CONNECTION WITH THIS AGREEMENT OR THE SALE OR USE OF THE PRODUCTS, WHETHER BASED ON NEGLIGENCE, STRICT LIABILITY, BREACH OF WARRANTY, BREACH OF AGREEMENT, OR EQUITABLE PRINCIPLES, IS EXPRESSLY LIMITED TO, AT ZOOZ'S OPTION, REPLACEMENT OF, OR REPAYMENT OF THE

PURCHASE PRICE FOR THAT PORTION OF PRODUCTS WITH RESPECT TO WHICH DAMAGES ARE CLAIMED. ALL CLAIMS OF ANY KIND ARISING IN CONNECTION WITH THIS AGREEMENT OR THE SALE OR USE OF PRODUCTS SHALL BE DEEMED WAIVED UNLESS MADE IN WRITING WITHIN THIRTY (30) DAYS FROM ZOOZ'S DELIVERY, OR THE DATE FIXED FOR DELIVERY IN THE EVENT OF NONDELIVERY.

FCC NOTE

THE MANUFACTURER IS NOT RESPONSIBLE FOR ANY RADIO OR TV INTERFERENCE CAUSED BY UNAUTHORIZED MODIFICATIONS TO THIS EQUIPMENT. SUCH MODIFICATIONS COULD VOID THE USER'S AUTHORITY TO OPERATE THE EQUIPMENT. STORE INDOORS WHEN NOT IN USE. SUITABLE FOR DRY LOCATIONS ONLY. DO NOT IMMERSE IN WATER. NOT FOR USE WHERE DIRECTLY EXPOSED TO WATER.

This device complies with Part 15 of the FCC Rules.

Operation is subject to the following conditions:
1. This device may not cause harmful interference,
2. This device must accept any interference received, including interference that may cause undesired operation.

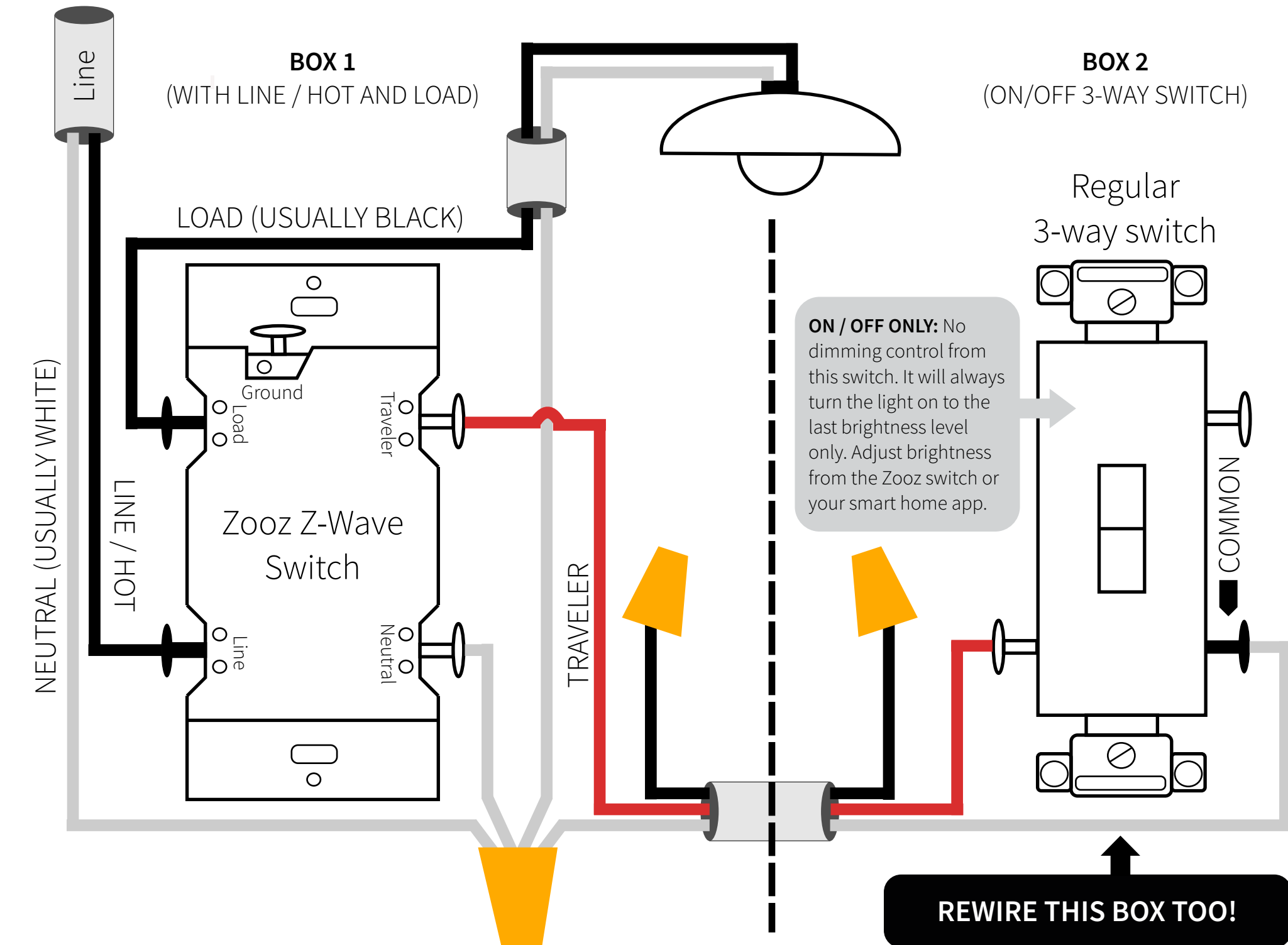
This equipment has been tested and found to comply with the limits for a Class B digital device, pursuant to part 15 of the FCC Rules. These limits are designed to provide reasonable protection against harmful interference in a residential installation. This equipment generates, uses and can radiate radio frequency energy and, if not installed and used according to instructions, may cause harmful interference to radio communications. However, there is no guarantee that interference will not occur in any given installation. If this equipment causes harmful interference to radio or television reception, the user may try to correct the interference by taking one or more of the following measures:
- Reorient or relocate receiving antenna
- Increase the separation between equipment and receiver
- Connect equipment into a separate outlet or circuit from receiver
- Consult the dealer or an experienced radio/TV technician for additional assistance

All brand names displayed are trademarks of their respective holders.
© Zooz 2018

3-WAY DIAGRAM FOR 2-POINT CONTROL OF ZOOZ SWITCHES: OPTION 1

3-WAY DIAGRAM FOR 2-POINT CONTROL OF ZOOZ SWITCHES: OPTION 2

Please follow the instructions from the Wiring section of the manual when completing the installation. If you're not sure about the wiring at any point, please consult a licensed electrician. Show these diagrams to your electrician to get them familiarized with Direct 3-Way wiring for electronic switches.



MANUAL CONTROL

1 CLICK: turns the light on to the last brightness level. It takes around 2 seconds for the dimmer to reach full brightness. See advanced settings to change the ramp rate.
PRESS AND HOLD: add brightness.
2 x CLICK: goes from off to full brightness.

1 CLICK: turns the light off (fade-out effect and 4-second ramp rate).
PRESS AND HOLD: reduce brightness.

Pull the **AIR-GAP SWITCH** out when changing bulbs to cut off power to the switch for your safety and shock prevention.



DO NOT connect Zooz Z-Wave switches to a 3-way dimmer. Zooz dimmers and switches can only be wired with mechanical on/off switches in a 3-way setting!

You can also use a simple 2-terminal on/off switch if you don't have a 3-way switch in place. Just connect neutral and traveler to any of the two terminals and it will work fine!

To simplify the diagrams, we did not include connections for the ground wire. Remember that all Zooz switches need to be wired according to the electrical code, with **ground wire connected to the ground terminal.**

