

# Minoston™

## MP20Z Smart Plug-2channel Manual



### FCC/IC

#### Federal Communications Commission (FCC) Statement

FCC Caution: Any changes or modifications not expressly approved by the party responsible for compliance could void the user's authority to operate this equipment.

This device complies with Part 15 of the FCC Rules. Operation is subject to the following two conditions: (1) This device may not cause harmful interference, and (2) this device must accept any interference received, including interference that may cause undesired operation.

NOTE: This equipment has been tested and found to comply with the limits for a Class B digital device, pursuant to Part 15 of the FCC Rules. These limits are designed to provide reasonable protection against harmful interference in a residential installation. This equipment generates, uses and can radiate radio frequency energy and, if not installed and used in accordance with the instructions, may cause harmful interference to radio communications. However, there is no guarantee that interference will not occur in a particular installation. If this equipment does cause harmful interference to radio or television reception, which can be determined by turning the equipment off and on, the user is encouraged to try to correct the interference by one or more of the following measures: Reorient or relocate the receiving antenna. Increase the separation between the equipment and receiver. Connect the equipment into an outlet on a circuit different from that to which the receiver is connected. Consult the dealer or an experienced radio/TV technician for help. This equipment should be installed and operated with minimum distance 20cm between the radiator and your body.

#### IC Caution:

This device complies with Industry Canada licence-exempt RSS standard(s). Operation is subject to the following two conditions: (1) this device may not cause interference, and (2) this device must accept any interference, including interference that may cause undesired operation of the device.

#### DECLARATION DE CONFORMITE D'INDUSTRIE CANADA

Ce périphérique a été testé et reconnu conforme aux limites spécifiées dans RSS-210.

Son utilisation est soumise aux deux conditions suivantes :

- (1) il ne doit pas provoquer d'interférences gênantes et
- (2) il doit tolérer les interférences reçues, notamment celles susceptibles d'en perturber le fonctionnement.

### WARRANTY

Show Home Products warrants this product to be free from manufacturing defects for a period of two years from the original date of consumer purchase. This warranty is limited to the repair or replacement of this product only and does not extend to consequential or incidental damage to other products that may be used with this product.

This warranty is in lieu of all other warranties, expressed or implied. Some states do not allow limitations on how long an implied warranty lasts or permit the exclusion or limitation of incidental or consequential damage, so the above limitations may not apply to you.

This warranty gives you specific rights, and you may also have other rights which vary from state to state. If the unit should prove defective within the warranty period.

### SPECIFICATIONS

Model: MP20Z

Power: 120 VAC, 60 Hz.

Signal (Frequency): 908.42 MHz.

Maximum load for outlet 10A, 1200W Resistive

Maximum load for the Z-Wave controlled outlet:

600W Incandescent, ½ HP Motor or 1200W Resistive

Range: Up to 100 feet line of sight between the Wireless Controller and the closest Z-Wave receiver module.

Operating Temperature Range: 32-104° F (0-40° C)

For indoor use only.

Specifications subject to change without notice due to continuing product improvement



smart plug-2channel

### WARNING

RISK OF FIRE

RISK OF ELECTRICAL SHOCK

RISK OF BURNS

CONTROLLING APPLIANCES:

EXERCISE EXTREME CAUTION WHEN USING Z-Wave

DEVICES TO CONTROL APPLIANCES. OPERATION

OF THE Z-Wave DEVICE MAY BE IN A DIFFERENT

ROOM THAN THE CONTROLLED APPLIANCE, ALSO AN

UNINTENTIONAL ACTIVATION MAY OCCUR IF THE WRONG

BUTTON ON THE REMOTE IS PRESSED. Z-Wave DEVICES

MAY AUTOMATICALLY BE POWERED ON DUE TO TIMED

EVENT PROGRAMMING. DEPENDING UPON THE APPLI-

ANCE, THESE UNATTENDED OR UNINTENTIONAL OP-

ERATIONS COULD POSSIBLY RESULT IN A HAZARDOUS

CONDITION. FOR THESE REASONS, WE RECOMMEND

DO NOT RETURN THIS PRODUCT TO THE STORE

THE FOLLOWING:

DO NOT USE Z-Wave DEVICES TO CONTROL ELECTRIC HEATERS OR ANY OTHER APPLIANCES WHICH MAY PRESENT A HAZARDOUS CONDITION DUE TO UNATTENDED OR UNINTENTIONAL OR AUTOMATIC POWER ON CONTROL.

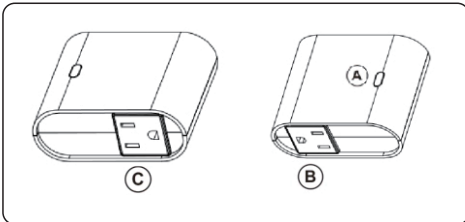
# 1.

## Getting To Know Your New Z-Wave Device

Must not exceed 600 watts (Incandescent): 1200W (10A) Resistive or ½ HP Motor. Total load capacity for both outlets is 1200W (10A) Resistive.

- One Z-Wave controlled AC outlet for standard incandescent light, CFL/LED, fans or small appliances
- Remote ON/OFF control via the Z-Wave controller
- Manual ON/OFF control with the front panel push button
- Space efficient design
- Does not block the lower outlet when plugged into the upper outlet of a duplex wall receptacle (This assumes that the duplex receptacle is mounted with the ground pin down).
- Plugs and cords for connected devices route to the side allowing close placement of furniture
- Grounded 3-wire power connection for safety

# 2.



### A. Manual/Program button

- Single press — turn the lamp On/Off
- Single press — include or exclude in Z-Wave network

### B. Z-Wave controlled outlet(1channel)

- This outlet can remotely turn On/Off

### C. Z-Wave controlled outlet(2channel)

- This outlet can remotely turn On/Off the connected device

1. Plug the light you want to control into the Z-Wave controlled smart outlet on the wireless switch as indicated by the Z-Wave logo

**NOTE:** Plug directly into outlet, do not use with extension cords

2. Plug the wireless smart switch directly into an available grounded outlet (Top outlet recommend if possible).

### TO return your switch to factory default:

1. If plugged in, unplug the smart switch from the receptacle.
2. Press and hold the top button for at least 3 seconds while you plug the smart switch into a receptacle.
3. Use this procedure only in the event that the network primary controller is missing or otherwise inoperable.

### Adding device to Z-Wave network:

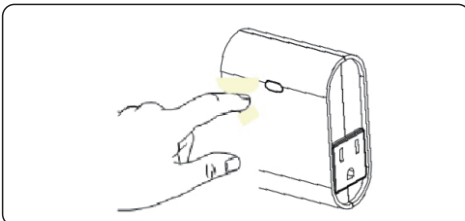
1. Follow the instructions for your Z-Wave certified controller to include a device to the Z-Wave network.
2. Once the controller is ready to include your device, press up and release the toggle to include it in the network.
3. Once your controller has confirmed that the device has been included, refresh the Z-Wave network to optimize performance.
4. The device is associated in the same group when it included in setting process. Now you can control your Z-wave device according to groups, scenes, schedules and automation programmed. If your controller features remote access, you can now control all devices in Z-Wave network from mobile devices.

### To exclude and reset the device

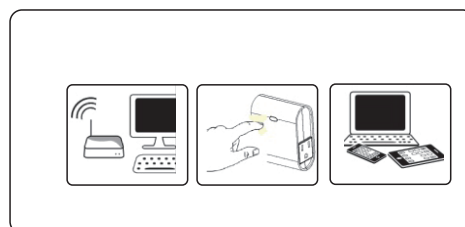
1. Follow the instructions for your Z-Wave certified controller to exclude a device from the Z-Wave network.
2. Once the controller is ready to Exclude your device, press up and release the toggle to exclude it from the network.

Our product can be included and operated in Z-Wave network with other certified devices and/or other applications.

# 4.



# 5.



All non-battery nodes within Z-Wave network will act as repeater

1. Follow the instructions for your Z-Wave certified controller to include the device to the Z-Wave network.
2. Once the controller is ready to include your device, single press and release the manual/program button on the device to include it in the network.
3. Once your controller has confirmed that the device has been included, refresh the Z-Wave network to optimize performance.
4. The association group supports two nodes and lifeline function.

**Note:** Your device may need to be within 10 feet of the controller to be included. If so, include the device to the network within 10 feet of the controller and relocate it to the desired position in your home. Be sure to refresh the network if the device is included in this manner.

**Please reference the controller/gateway's manual for instructions.**

Now you have complete control to turn your lamp ON/OFF according to groups, scenes, schedules and interactive automation programmed by your controller. If your Z-Wave certified controller features Remote Access, you can now control your lighting from your mobile phone devices.