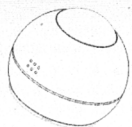
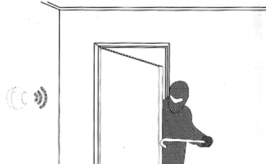


Smart Motion Sensor (PIR) User Manual SM-A803N

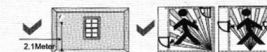
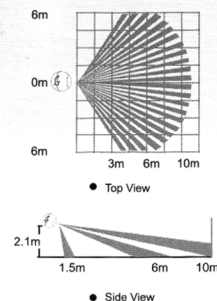
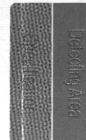


Rev: E201601-PIR

This product is Smart Motion Sensor SM-A803N, adopts extra low power consumption Z-Wave wireless network and automatic threshold adjustment technology to enhance the stability of the detector, efficiently anti-false alarm. Automatic temperature compensation technology, can efficiently prevent detectors from the decrease in sensitivity resulted from the temperature variation. Suitable to be used for safety protection of residential, villas, factories, shopping malls, warehouses, office buildings, banks, computer room and other location.



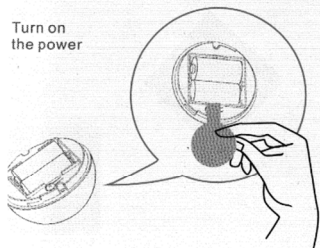
- *Motion detection
- *Measure the light sensitivity
- *Compatible with 300 series and 500 series
- *Easy installation on wall or any surface
- *Range: up to 70m outdoor; up to 50m indoor
- *Power supply: CR123A x 2
- *Standby current: 15uA x 2
- *Battery life: 7 years
- *Radio Protocol: Z-Wave plus
- *Radio Frequency: 868.4MHz EU; 908.4MHz US; 921.4MHz ANZ; 869.2MHz RU or others
- *Detection range: 7 meters
- *Viewing angle: 90 degree
- *Operation temper: 0-40°C
- *Storage temperature: 0-60°C
- *Size (D x W x H): 60mm x 60mm x 52mm



- * Please avoid installation in outdoor, the area with pets, air-conditioned, heat source nearby, the area with direct sunshine and location under rotating objects.
- * The installation surface should be solid without vibration.
- * Please install the detector in that location where an intruder may pass easily

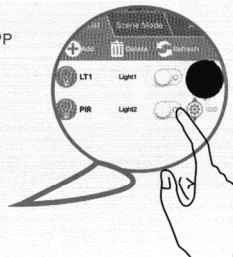
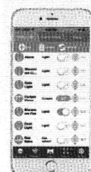


Turn on the power

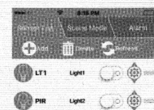
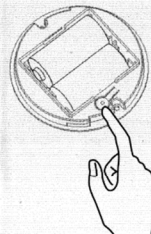


Removing insulation make device on power. Device will in warm-up state when red LED flashes, after 30 seconds LED off, warm-up complete.

Add on the APP of Gateway



Detector will enter the network mode by clicking adding devices in APP of Z-Wave gateway.



Then open the cover case of PIR and press the PIR button that near the battery for 3 Times continuously. The APP will shows the sensor added successful or not. If fail, please try more times until the PIR sensor be added into the APP.

Installation

- (1) Install the bracket on wall with screws
- (2) and screw stopper adhesive
- (3) Mount the PIR on bracket

This Motion Detector supports Command Classes as Below:

- * COMMAND_CLASS_ZWAVEPLUS_INFO (V2)
- * COMMAND_CLASS_VERSION (V2)
- * COMMAND_CLASS_MANUFACTURER_SPECIFIC (V2)
- * COMMAND_CLASS_DEVICE_RESET_LOCALLY (V1)
- * COMMAND_CLASS_POWERLEVEL (V1)
- * COMMAND_CLASS_BATTERY (V1)
- * COMMAND_CLASS_ASSOCIATION (V2)
- * COMMAND_CLASS_ASSOCIATION_GRP_INFO (V1)
- * COMMAND_CLASS_WAKE_UP (V2)
- * COMMAND_CLASS_NOTIFICATION (V4)
- * COMMAND_CLASS_SENSOR_BINARY (V2)
- * COMMAND_CLASS_CONFIGURATION (V1)
- * COMMAND_CLASS_SENSOR_MULTILEVEL (V7)