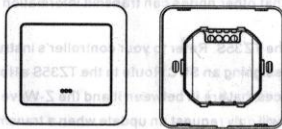


TZ35S DIMMER MODULE

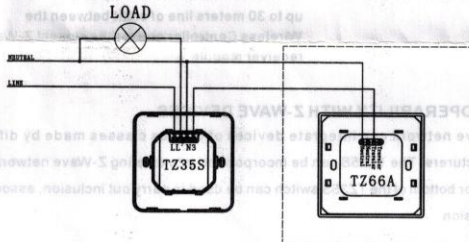
Radio Frequency (RF) Controlled, 300W, 230 VAC, European Wall Mounted 3-Way Dimmer Switch, Single Dimmer Switch, Release 1.1



TZ35S

TZ35S Connections
 L: Line voltage input
 L': Switched load output
 N: Line neutral
 3: Auxiliary switch signal input

Note: This module must be "Included in the Network" only where it will be permanently installed. The proper operation of this node in the mesh network is dependent on it knowing its location with respect to other nodes. You cannot "test bench" configure this module.



TZ35S WALL MOUNTED SWITCH

The TZ35S Wall Mounted 3-Way Dimmer Switch is a component of the lighting control system.

This Wall Mounted Dimmer Switch is designed to work with other Z-Wave enabled devices. Z-Wave nodes of other types can be added to the system and will also act as repeaters if they support this function of repeating the signal received to other modules in the system.

01

BASIC OPERATION

(Local control)

The switch on the TZ35S allows the user to:

- Turn ON/OFF or Dimming the attached load.
- Include or exclude the module from the Z-Wave system
- Control other Z-Wave enabled devices.

Also, when a controller prompts you to "Send Node ID" or to "Press Button on Unit", quickly tap the switch ON or OFF once to satisfy those instructions.

- Tapping top of switch turns the load attached ON.
- Tapping bottom of switch turns the load attached OFF.

- Pressing and holding the switch will allow dimming and brightening of the attached load or the other Z-Wave dimmers if associated.

Caution: When dimmed to the lowest setting, even though the load looks like it's off, it still has power. Tap bottom of switch to turn off completely. It is best to turn off the power at the circuit breaker to service the load. Returns to known ON/OFF state after power loss.

LED Indication

The LED on the TZ35S will turn on when the load attached is off, to act as a night light. However, the LED can be user configured to turn on when the load attached is on. The TZ35S will flicker its LED when it is transmitting to any of the groups. This can be changed if desired. See "LED transmission Indication".

Remote control

The TZ35S will respond to BASIC and BINARY commands that are part of the Z-Wave system. Refer to your controller's instructions as to whether your controller can transmit those commands.

ADVANCED OPERATION

All on/All Off

The TZ35S supports the ALL ON/ ALL OFF commands.

The TZ35S can be set to respond to ALL ON and ALL OFF commands 4 different ways.

Refer to your controller for information on how to set the TZ35S to operate in the manner you desire. Some controllers may be only able to set certain settings of ALL ON/ALL OFF response the 4 different ways the TZ35S can be setup to respond to ALL ON and ALL OFF commands are:

1. TZ35S Will not respond to ALL ON or the ALL OFF command.
2. TZ35S Will respond to ALL OFF command but will not respond to ALL ON command.
3. TZ35S Will respond to ALL ON command but will not respond to ALL OFF command.
4. TZ35S Will respond to ALL ON and the ALL OFF command.

Association

The TZ35S supports the association command.

03

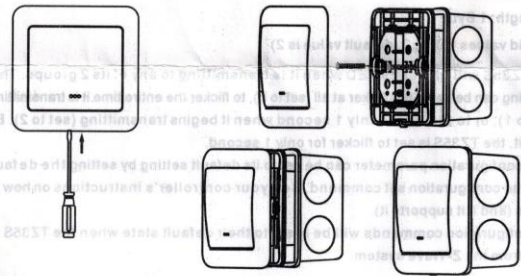
As part of a Z-Wave network, the TZ35S will also act as a wireless repeater to insure that commands intended for another device in the network are received. This is useful when the device would otherwise be out of the radio range of the wireless controller. There are no field repairable assemblies on this unit. If service is needed, the unit must be returned where purchased.

INSTALLATION

DANGER! SHOCK HAZARD. Read and understand these instructions before installing. It is recommended that a qualified electrician perform this installation. Make sure the lights controlled by the switch does not exceed 300W. For indoor use only. Retain instructions for future use.

Wire this switch in place of a current wall switch according to the diagram above.

See the wireless controller operating instructions to add this module under the command of the wireless controller.



INCLUDING TZ35S TO THE NETWORK

Including to the network (must be installed in its permanent location, not on test bench)

1. Setup the controller you are using to include a device into network.
2. Tap either the top or bottom of the switch once.

Excluding from the network

1. Setup the controller you are using to exclude a device from the network.
2. Tap either the top or the bottom of the switch once.

02

The TZ35S can be set to control other Z-Wave devices. Those devices must be installed in their permanent location. You can turn on/off, and dim other Z-Wave devices once they are "associated" into 1 group within the TZ35S.

Each group is turned on or off (or dimmed) by tapping or holding the switch a differing amount of times.

Group 1 Control: If you associate a Z-Wave device into Group 1, you can turn that device ON and OFF by tapping the top or bottom of the switch once. The load attached to the TZ35S will also turn on or off.

You can brighten the controlled device by pushing and holding the top of the switch, dim by pushing and holding the bottom of the switch.

You can associate up to 5 Z-Wave devices into Group 1.

For instructions on how to "associate" a Z-Wave device into the group, refer to your wireless controller instructions.

A note about dimming, if you combine Z-Wave enabled dimmers and other types of Z-Wave devices in a group, place a Z-Wave enabled dimmer into the empty group first to ensure that the dimming operates correctly.

Configuration

The TZ35S supports the configuration command.

The TZ35S can be configured to operate slightly differently than how it works when you first install it. Using the configuration command you can configure the following:

- Set Ignore start level bit when transmitting dim command
- Night light operation
- LED transmission indication

You can use a controller to send configuration commands. (Refer to the setup menu, configuration section)

Set Ignore start level bit when transmitting dim commands

- Parameter No: 1
- Length: 1 Byte
- Valid values = 0 or 1 (default value is 1)

The TZ35S can send dim commands to Z-Wave enabled dimmers. The dim command has a start level embedded in it. A dimmer receiving this command will start dimming from that start level. However, the command also has a bit that indicates whether the dimmer should ignore the start level. If the bit is set to 1, the dimmer will ignore the start level and instead start dimming from its current level. If this bit is set to 0, the dimmer will not ignore the start level.

04

Night light

- Parameter No: 3
- Length: 1 Byte
- Valid values = 0 or 1 (default value is 0)

The LED on the TZ35S will by default, turn ON when the load attached is turned OFF. To make the LED turn ON when the load attached is turned ON instead, set parameter 3 to a value of 1.

Invert switch

- Parameter No: 4
- Length: 1 Byte
- Valid values = 0 or 1 (default value is 0)

parameter is set to 1.

LED transmission indication

- Parameter 19
- Length: 1 Byte
- Valid values = 0, 1, 2 (default value is 2)

The TZ35S will flicker its LED when it is transmitting to any of its 2 groups. This flickering can be set to not flicker at all (set to 0), to flicker the entire time it is transmitting (set to 1), or to flicker for only 1 second when it begins transmitting (set to 2). By default, the TZ35S is set to flicker for only 1 second.

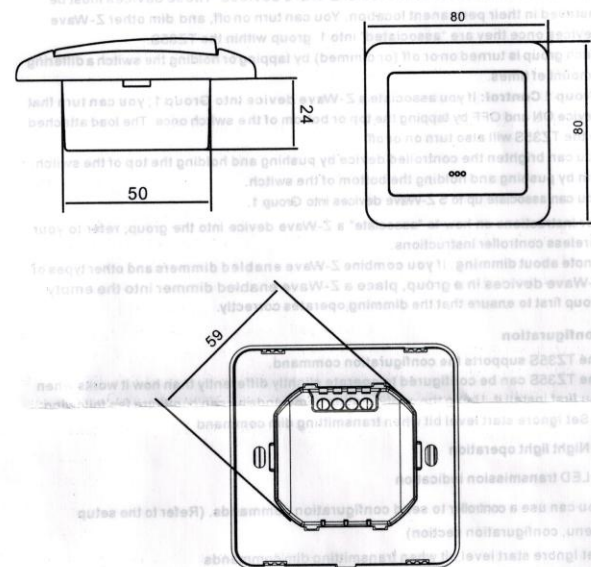
Each configuration parameter can be set to its default setting by setting the default bit in the configuration set command. See your controller's instructions on how to do this (and if it supports it).

All configuration commands will be reset to their default state when the TZ35S is reset from the Z-Wave system.

Power level

The TZ35S supports the power level command.

The power level command allows controllers to set and get the RF transmit power level of a node and test specific links between nodes with specific RF transmit power. Refer to your controller's instructions, if it supports this command, for more information. This command is typically used by professional installers.



SUC Support

There must be a static Update controller in your Z-Wave system for this feature to work. The static controller can act as a gateway in the system, since other nodes always know its position (not moved after addition to the network). The "always listening" advantage of the static controller is that other nodes can transmit information frames to it whenever needed.

You can assign an "SUC Route" to the TZ35S. Refer to your controller's instructions on how to do this (if it supports it). Assigning an SUC Route to the TZ35S allows it to request an update of the Z-Wave devices that are in between it and the Z-Wave device it was trying to transmit to. The TZ35S will only request an update when a transmission fails.

SPECIFICATIONS

Power:	230 VAC, 50 Hz
Signal (frequency):	868.42 MHz
Maximum Load-Resistive:	300W, for Incandescent lamp only
Range:	up to 30 meters line of sight between the Wireless Controller and/or the closest Z-Wave receiver module

INTEROPERABILITY WITH Z-WAVE DEVICES

A Z-Wave network can integrate devices of various classes made by different manufacturers. The TZ35S can be incorporated into existing Z-Wave networks.

The top or bottom of the TZ35S switch can be used to carry out inclusion, association, or exclusion.

The TZ35S Wall Mounted 3-Way Dimmer Switch is a component of the lighting control system. This Wall Mounted Dimmer Switch is designed to work with other Z-Wave enabled devices. Z-Wave nodes of other types can be added to the system and will also be able to support this function of repeating the signal received to other modules in the system.

BASIC OPERATION
(Local control)
The switch on the TZ35S allows the user to:
- Turn ON/OFF or Dimming the attached load
- Include or exclude the module from the Z-Wave system
- Control other Z-Wave enabled devices
Also, when a controller prompts you to "Send Node ID" or "Press Button on...", quickly hit the switch ON or OFF, or dimmer, to send the instructions.
- Top of switch: Turn the load attached ON
- Bottom of switch: Turn the load attached OFF
- Pressing and holding the switch will allow dimming and brightening of the attached load to the other Z-Wave dimmers it associated.
Caution: When dimming the lowest setting, even though the load looks like it is off, it will not be. The bottom of switch is turn off completely. It is best to turn off the power at the circuit breaker to service the load. Returns to known ON/OFF state after power loss.
LED indication
The LED on the TZ35S will turn on when the load attached is off, to act as a night light. However, the LED can be configured to turn off when the load attached is on. The TZ35S will flicker its LED when it is transmitting to any of the groups. This can be configured in the "LED transmission indication" parameter.

Remote control
The TZ35S will respond to BASIC and BINARY commands that are part of the Z-Wave system. Refer to your controller's instructions as to whether your controller can transmit those commands.

ADVANCED OPERATION
All ON/OFF
The TZ35S supports the ALL ON/OFF commands.
The TZ35S can be set to respond to ALL ON and ALL OFF commands in different ways. Refer to your controller for information on how to set the TZ35S to operate in the manner you desire. Some controllers may be only able to set certain settings of ALL ON/OFF. The TZ35S can be set to respond to:
- ALL ON and ALL OFF commands
- TZ35S will not respond to ALL ON or ALL OFF commands
- TZ35S will respond to ALL OFF command but will not respond to ALL ON command
- TZ35S will respond to ALL ON command but will not respond to ALL OFF command
- TZ35S will respond to ALL ON and ALL OFF command

Association
The TZ35S supports the association command.