



brought to you by:



ZW37 Smart Plug (2-Channel) Manual

Federal Communications Commission (FCC) Statement

FCC Caution: Any changes or modifications not expressly approved by the party responsible for compliance could void the user's authority to operate this equipment.

This device complies with Part 15 of the FCC Rules. Operation is subject to the following two conditions: (1) This device may not cause harmful interference, and (2) this device must accept any interference received, including interference that may cause undesired operation.

NOTE: This equipment has been tested and found to comply with the limits for a Class B digital device, pursuant to Part 15 of the FCC Rules. These limits are designed to provide reasonable protection against harmful interference in a residential installation. This equipment generates, uses and can radiate radio frequency energy and, if not installed and used in accordance with the instructions, may cause harmful interference to radio communications. However, there is no guarantee that interference will not occur in a particular installation. If this equipment does cause harmful interference to radio or television reception, which can be determined by turning the equipment off and on, the user is encouraged to try to correct the interference by one or more of the following measures: Reorient or relocate the receiving antenna, increase the separation between the equipment and receiver, connect the equipment into an outlet on a circuit different from that to which the receiver is connected or consult the dealer or an experienced radio/TV technician for help. This equipment should be installed and operated with minimum distance 8in (20cm) between the radiator and your body.

IC Caution: This device complies with Industry Canada licence-exempt RSS standard(s).

Operation is subject to the following two conditions: (1) this device may not cause interference, and (2) this device must accept any interference, including interference that may cause undesired operation of the device.

DECLARATION DE CONFORMITE D'INDUSTRIE CANADA

Ce périphérique a été testé et reconnu conforme aux limites spécifiées dans RSS-210.

Son utilisation est soumise aux deux conditions suivantes :

- (1) il ne doit pas provoquer d'interférences gênantes et
- (2) il doit tolérer les interférences reçues, notamment celles susceptibles d'en perturber le fonctionnement.

WARRANTY

Show Home Products warrants this product to be free from manufacturing defects for a period of two years from the original date of consumer purchase. This warranty is limited to the repair or replacement of this product only and does not extend to consequential or incidental damage to other products that may be used with this product.

This warranty is in lieu of all other warranties, expressed or implied. Some states do not allow limitations on how long an implied warranty lasts or permit the exclusion or limitation of incidental or consequential damage, so the above limitations may not apply to you.

This warranty gives you specific rights, and you may also have other rights which vary from state to state, if the unit should prove defective within the warranty period.

SPECIFICATIONS

Model: ZW37 (2-Channel)

Power: 120V AC, 60Hz.

Signal (Frequency): 908.42 MHz.

Maximum load for the Z-Wave controlled outlets:

10Amp Max * 2-Channel (10Amp Total, not per outlet)

Range: Up to 100 feet line of sight between the Wireless Controller and the closest Z-Wave receiver module.

Operating Temperature Range: 32-104° F (0-40° C)

For indoor use only.

Specifications subject to change without notice due to continuing product improvement

Dimensions: 3.19" x 2.56" x 1.30"

Approval: UL/FCC/IC/NCC/Z-Wave Plus Certified

UL: E464831

FCC ID: OXGZW36

Z-Wave Plus: ZC10-16010013



WARNING

RISK OF FIRE

RISK OF ELECTRICAL SHOCK

RISK OF BURNS

CONTROLLING APPLIANCES:

EXERCISE EXTREME CAUTION WHEN USING Z-WAVE DEVICES TO CONTROL APPLIANCES. OPERATION OF THE Z-WAVE DEVICE MAY BE IN A DIFFERENT ROOM THAN THE CONTROLLED APPLIANCE, ALSO AN UNINTENTIONAL ACTIVATION MAY OCCUR IF THE WRONG BUTTON ON THE REMOTE IS PRESSED. Z-WAVE DEVICES MAY AUTOMATICALLY BE POWERED ON DUE TO TIMED EVENT PROGRAMMING. DEPENDING UPON THE APPLIANCE, THESE UNINTENDED OR UNINTENTIONAL OPERATIONS COULD POSSIBLY RESULT IN A HAZARDOUS CONDITION. FOR THESE REASONS, WE RECOMMEND DO NOT RETURN THIS PRODUCT TO THE STORE, BUT RATHER CONTACT THE MANUFACTURER OF THE PRODUCT TO ARRANGE AN EXCHANGE OR REFUND IF THE PRODUCT IS DEEMED DEFECTIVE.

Disclaimer: Show Home is a separate entity from Inovelli. We have partnered to bring unique Smart Devices to market. We hope you are happy with your purchase and for more information, please visit:

www.inovelli.com



Smart Plug (2-Channel)



For more information about the benefits of Z-Wave, please visit:
http://z-wavealliance.org/about_z-wave_technology/

IMPORTANT INFORMATION ABOUT YOUR Z-WAVE SMART PLUG

Must not exceed 600 watts (Incandescent): 1200W (10A) Resistive or ½ HP

Motor: Total load capacity for both outlets is 1200W (10A) Resistive.

- Two Z-Wave controlled AC outlet for standard incandescent lighting, CFL/LED, fans or small appliances
- Remote ON/OFF control via a Z-Wave controller (2-Channels)
- Manual ON/OFF control with the front panel push button
- Space efficient design
- Does not block the lower outlet when plugged into the upper outlet of a duplex wall receptacle (This assumes that the duplex receptacle is mounted with the ground pin down).
- Plugs and cords for connected devices route to the side allowing close placement of furniture
- Grounded 3-wire power connection for safety

For a quick setup guide,
please scan the QR Code
below or go to:

www.inovelli.com/NZW37-setup



GETTING TO KNOW YOUR Z-WAVE SMART PLUG

A. Manual/Program button (Toggle)

Single press — turn the lamp On/Off

Single press (while setting up) — include or exclude in Z-Wave network

B. Z-Wave controlled outlet (Channel 1)

This outlet can be remotely turned On/Off on the connected device

C. Z-Wave controlled outlet (Channel 2)

This outlet can be remotely turned On/Off on the connected device

GETTING STARTED | PLUGGING IN YOUR MODULE

1. Plug the light or appliance you want to control into the Z-Wave controlled smart plug (B or C) on the wireless switch as shown in Step 3.

NOTE: Plug directly into outlet, do not use with extension cords

2. Plug the wireless smart switch directly into an available grounded outlet (Top outlet recommend if possible).

TO RETURN YOUR DEVICE TO FACTORY DEFAULT

1. If plugged in, unplug the smart switch from the receptacle.
2. Press and hold the top button for at least 3 seconds while you plug the switch into a receptacle
3. Use this procedure only in the event that the network primary controller is missing or otherwise inoperable.

ADDING YOUR DEVICE TO YOUR Z-WAVE NETWORK

1. Follow the instructions for your Z-Wave certified controller to include a device to the Z-Wave network.
2. Once the controller is ready to include your device, press in and release the toggle (A) **3-5 times within 3 seconds** to include it in the network.
3. Once your controller has confirmed that the device has been included, refresh the Z-Wave network to optimize performance (may vary based on controller).
4. Now your device should be fully operational and able to be used as normal

EXCLUDING AND RESETTING YOUR DEVICE

1. Follow the instructions for your Z-Wave certified controller to exclude a device from the Z-Wave network.
2. Once the controller is ready to exclude your device, press in and release the toggle (A) **3-5 times within 3 seconds** to exclude it from the network.

INCLUDING YOUR DEVICE

Our product can be included and operated in Z-Wave network with other certified devices and/or other applications.

Note: All non-battery nodes within Z-Wave network will act as repeater

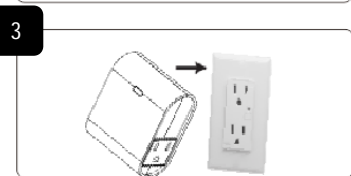
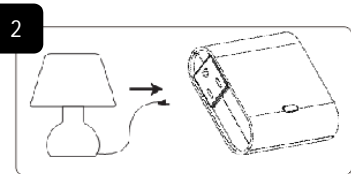
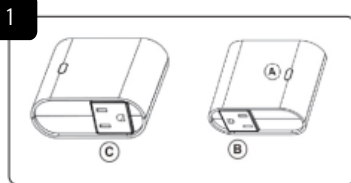
1. Follow the instructions for your Z-Wave certified controller to include the device to the Z-Wave network.
2. Once the controller is ready to include your device, single press and release the toggle (A) **3-5 times within 3 seconds** on the device to include it in the network.
3. Once your controller has confirmed that the device has been included, refresh the Z-Wave network to optimize performance.
4. The association group supports two nodes and life line function.

Note: Your device may need to be within 10 feet of the controller to be included. If so, include the device to the network within 10 feet of the controller and relocate it to the desired position in your home. Be sure to refresh the network if the device is included in this manner.

Please reference the controller/gateway's manual for instructions.

Now you have complete control to turn your lamp ON/OFF according to groups, scenes, schedules and interactive automations programmed by your controller. If your Z-Wave certified controller features Remote Access, you can now control your lighting from your mobile phone devices.

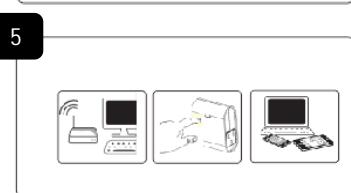
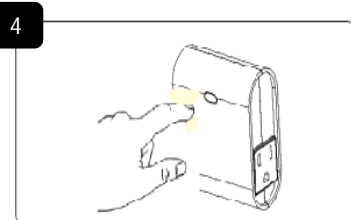
For information on the "Command Classes", please visit: www.inovelli.com/NZW37-manual.pdf



FOR TROUBLESHOOTING HELP

please see our tutorials on
common troubleshooting issues as
well as to submit a question if you
are having issues.

www.inovelli.com/nzw37-help



COMMAND CLASS INFORMATION

Generic Device Class	GENERIC_TYPE_SWITCH_BINARY
Specific Device Class	SPECIFIC_TYPE_POWER_SWITCH_BINARY
Command Classes	COMMAND_CLASS_ZWAVEPLUS_INFO
	COMMAND_CLASS_ASSOCIATION
	COMMAND_CLASS_ASSOCIATEION_CRP_INFO
	COMMAND_CLASS_DEVICE_RESET_LOCALLY
	COMMAND_CLASS_MANUFACTURER_SPECIFIC
	COMMAND_CLASS_MULTI_CHANNEL
	COMMAND_CLASS_MULTI_CHANNEL_ASSOCIATION
	COMMAND_CLASS_POWERLEVEL
	COMMAND_CLASS_SWITCH_ALL
	COMMAND_CLASS_SWITCH_BINARY
	COMMAND_CLASS_VERSION