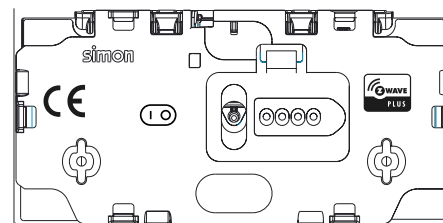




simon

SWICHT KEYPAD



10002034-13X

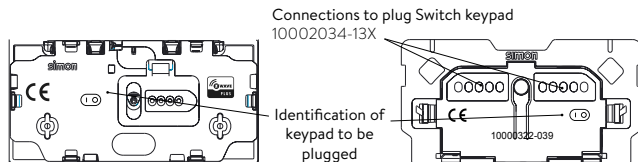
Technical characteristics

Z-Wave UE	868.42 MHZ	Voltage Supply From 10000322-039	INTERFACE CONNECTOR to plug on 10000322-039
INDICATORS 1 LED	40°C 0°C	95%HR	IP20
			

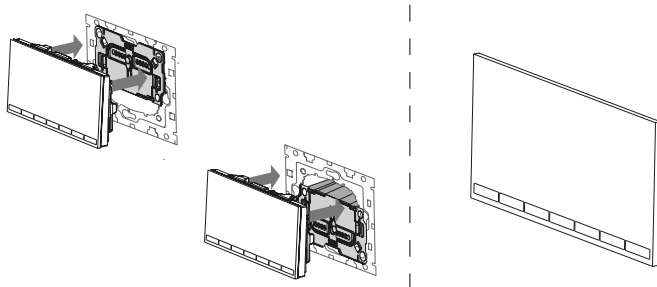
simon

INSTALLATION

1



2



DESCRIPTION

Once plugged to 10000322-039 This Keypad permits the direct control of a load toggling it each time that the pushbutton is pressed. It is also possible to control the load using Z-Wave devices

DEVICE SPECIFICATION	
Device Type	ON/OFF POWER SWITCH
Generic Device Type	GENERIC_TYPE_SWITCH_BINARY
Specific Device Type	SPECIFIC_TYPE_POWER_SWITCH_BINARY
Role Type	ROLE_TYPE_SLAVE_ALWAYS_ON

SUPPORTED COMMAND CLASSES	
COMMAND_CLASS_ZWAVEPLUS_INFO_V2	
COMMAND_CLASS_VERSION_V4	
COMMAND_CLASS_MANUFACTURER_SPECIFIC_V2	
COMMAND_CLASS_BASIC_V1	
COMMAND_CLASS_SWITCH_BINARY_V1	
COMMAND_CLASS_ASSOCIATION_V2	
COMMAND_CLASS_ASSOCIATION_GRP_INFO_V3	
COMMAND_CLASS_POWERLEVEL_V1	
COMMAND_CLASS_CONFIGURATION_V2	
COMMAND_CLASS_METER_V4 (Electric measurement; only Watts measurement allowed)	
COMMAND_CLASS_DEVICE_RESET_LOCALLY_V1	
COMMAND_CLASS_FIRMWARE_UPDATE_MD_V4	

Z-WAVE COMPLIANCE

This product can be included and operated in any Z-Wave network with other Z-Wave certified devices from other manufacturers and/or other applications. All non-battery operated nodes within the network will act as repeaters regardless of vendor to increase reliability of the network.

KEYPAD USE & FEEDBACKS

EVENT	KEYPAD ACTION	MAIN LED RESPONSE
Default State	No pressed	Device is member of a Z-Wave Network Device is Stand Alone LED
	Touching detected	LED ON
Press action	Keypad Pressed Short Press (T<2sec)	LED status according Load State
(Toggle)	Keypad Release	If LED ON, it turns OFF in 5 sec
ADD / REMOVE Network or Association	Hold Press (2sec<T<20sec) Device Sends a NIF	Blinks with 0,3 sec period
Reset Default	Hold Press (20sec<T) Device removed from Z-Wave network and Params are restored to default.1	1 Blink with 5 sec period
Dysfunction		LED Will blink with 0,1 sec period

¹ Is it recommended to disassociate the keypad from all previous device associations before remove it.

CONFIGURATION

	NAME	SIZE BYTE	VALUES
1	Association LED	1	0x00 -> Turns the LED OFF (default) 0xFF -> Turns the LED ON
10	Delay ON	1	0x00 Instantly (default) 0x01-0x7F 1 second (0x01) to 127 seconds (0x7F) in 1 second resolution.
11	Activation TIME		0x80-0xFE 1 minute (0x80) to 127 minutes (0xFE) in 1 minute resolution.
16	Delay OFF		
12	Behavior of LED in Repose	1	0x00 -> LED OFF (Default) 0xFF -> LED on at 20% of maximum level
13	Lock Input	1	0x00 -> Unlock the direct control of load. (Default) 0xFF -> Lock the direct control of load.
15	Reset Default	2	0x9867 -> Parameters, Groups, and Z-Wave status are restored to default. (Write Only)

These configurations are not restored to default when device is removed from network. COMMAND_CLASS_DEVICE_RESET_LOCALLY -> DEVICE_RESET_LOCALLY_NOTIFICATION will be sent to inform controller that node has been removed from network, but the device will keep the current configurations.

- To restore the configurations values, please perform one of these actions:
 - Use Command CONFIGURATION SET with default bit to 1 for each configuration parameter.
 - Perform Reset Default Action via keypad pressing or Command Reset Default.

ASSOCIATION GROUPS

Number of Groups	Group 1 (Lifeline) -> Name "LIFE"
Max. devices in Group 1	3
Automatic reports to Group1	On/Off Report when load state is changed: - On -> CC Basic, Basic Report, Value 0xFF - On -> CC Basic, Basic Report, Value 0x00 Instant Power Consumption vary over 10% and is stable almost 2sec - CC Meter, Meter Report, "Electric meter", "Consumed", "Watts", Size 4, Precision 1, Value (W)