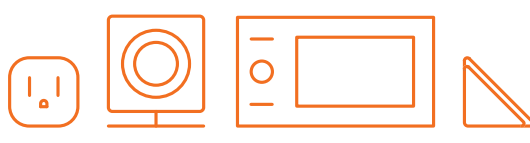


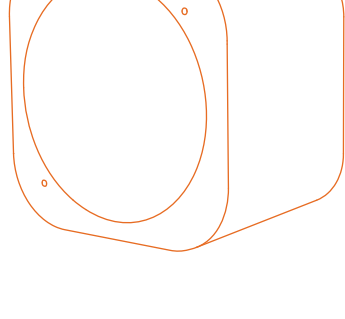
# User Guide

## OOMI MultiSensor

For additional support:  
<http://oomi.com/support>



Note: MultiSensor is a multi-function sensor device that can detect and report temperature, humidity, ambient light, UV light, vibration and human infrared movement.

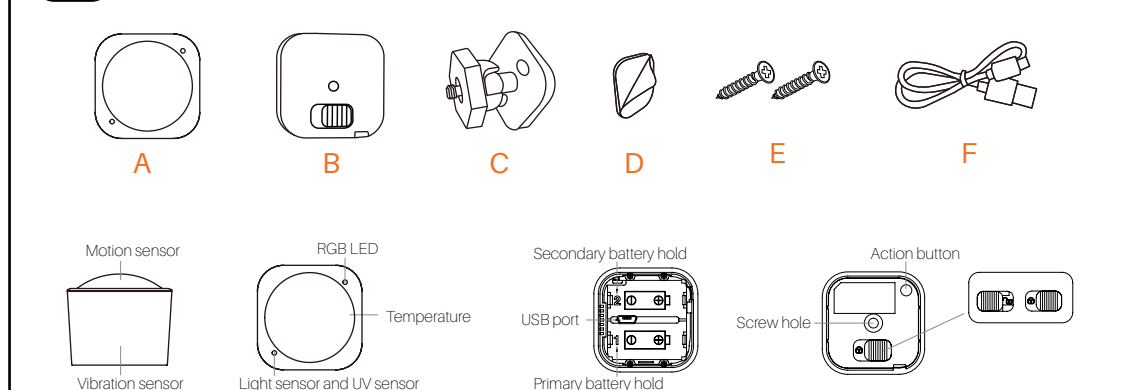


## Familiarize yourself with

### OOMI MultiSensor

#### Package Contents

- A MultiSensor
- B Battery cover
- C Back-mount arm
- D Double-sided tape
- E Screws (x2)
- F Micro USB cable



## Quick Start

### OOMI

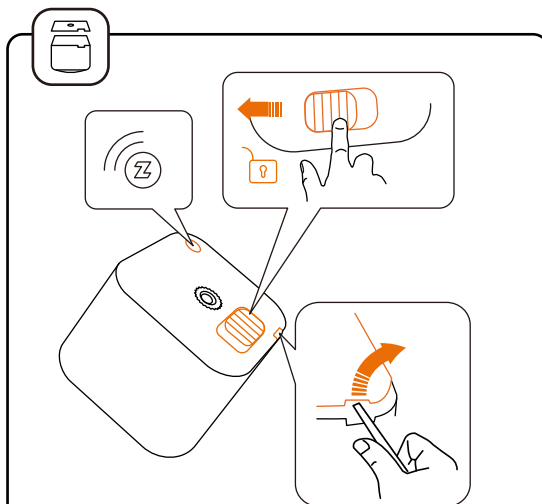
### 1 Setup your power

Your MultiSensor can be powered by battery or by USB with an appropriate adaptor. If you intend to power your MultiSensor with the USB cable, you will need an adaptor (not provided).

You may utilize any USB power adaptor, or a powered USB port on a computer or other electronic device.

### 2 For a USB powered installation

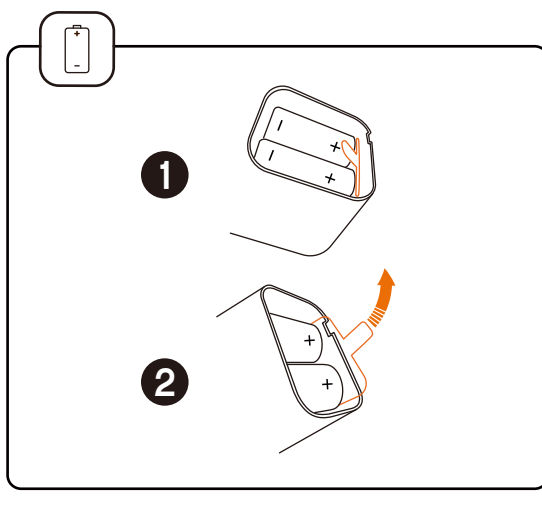
- Remove the battery cover by sliding the unlock button and separating the two parts of your sensor.
- Insert the appropriate end of the provided Micro USB cable into your sensor's USB port. Insert the other end of the USB into your adaptor or powered USB port. Your MultiSensor is now powered on.



### 3 For a battery powered installation

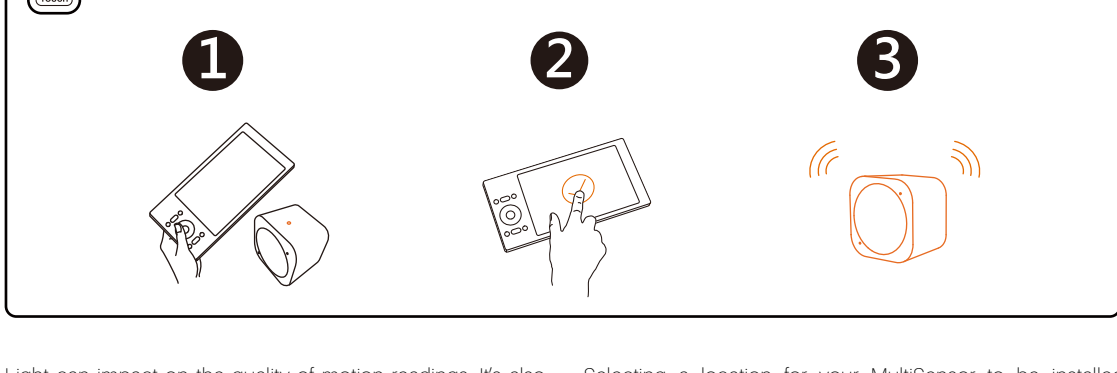
- Remove the rear part of your sensor as shown in the previous step 1.
- Insert 2x CR123A batteries as in the picture on the right. Your MultiSensor is now powered on.

Note: Unlike many other devices, the batteries align in the same direction with each other. Both positive terminals are on the same side.



### 4 Add your MultiSensor to Oomi System

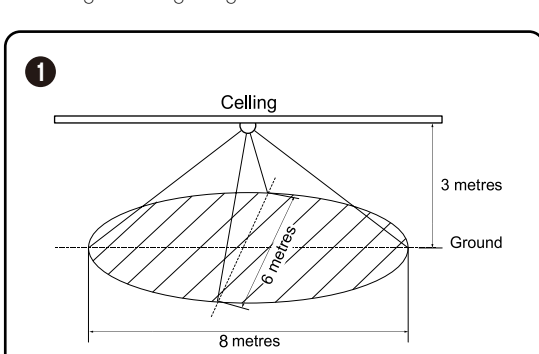
It's now time to pair your MultiSensor with Oomi System. To add to an Oomi System, just tap the orange dot with your Oomi Touch, ensuring both dots meet.



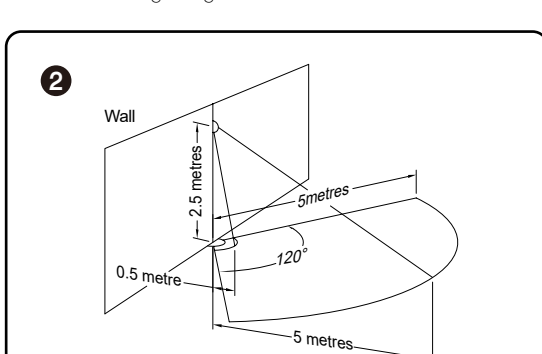
Light can impact on the quality of motion readings. It's also important to understand environmental changes that may impact on other readings within your home. Specifically, your MultiSensor should not be installed in areas of artificial temperature change. Thus, when selecting a location, avoid placing it beside or near air conditioners, humidifiers, and heaters, and avoid positioning it directly opposite a window or direct sunlight.

Selecting a location for your MultiSensor to be installed depends on the use case. Whatever the case or the installation location, please ensure that it fits with your sensor's effective motion sensing range as described in these diagrams.

For ceiling mounting using the back-mount arm:



For wall mounting using the back-mount arm:



For optimal performance, your MultiSensor should NOT be mounted directly on or near metal framing or other large metallic objects. Large metal objects may weaken the Z-Wave wireless signal.

If selecting an outdoor location, it's important to position your MultiSensor in a sheltered location. Ensure that your MultiSensor is not directly exposed to rain or water as this will damage your sensor and the detection components.

### 5 Physically install your MultiSensor

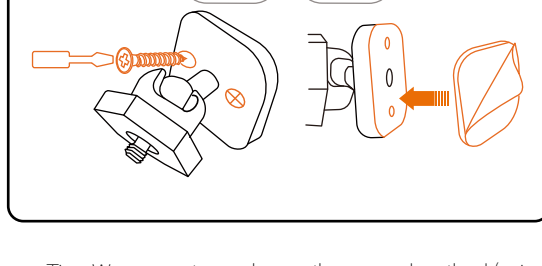
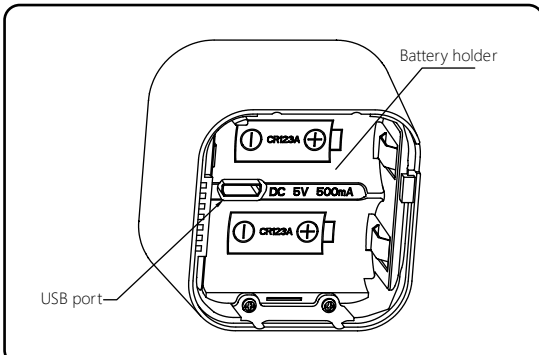
With your MultiSensor now part of your Z-Wave network, it's time to finish its physical installation.

There are two ways that your MultiSensor can be mounted on a wall or ceiling. Using the back-mount plate, you can mount it flat against a wall or ceiling. Using the back-mount arm you can mount it on a surface or in a corner and angle it as desired.

To physically install your MultiSensor:

- Reattach the two parts of your MultiSensor to each other. To do this, align the lock/unlock half-dimple markers that are under the unlock symbol and then twist in a clockwise motion.
- If USB is used to power your MultiSensor, ensure that power can be provided to your desired installation location. Please note that when installed in areas where the temperature can drop below -10°C, it is advised that USB power is used and battery power is not.

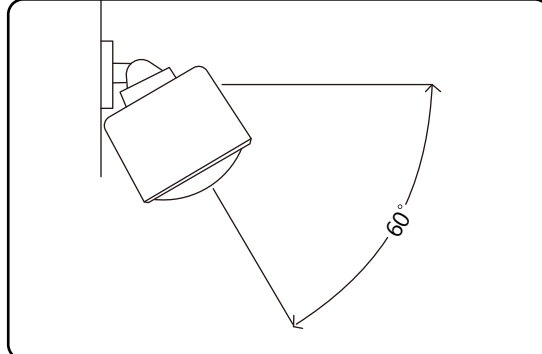
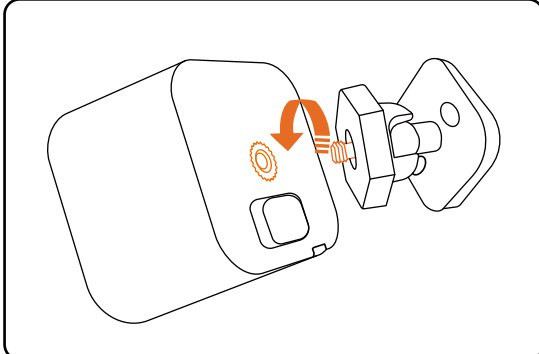
- Attach your desired mounting accessory. This can be the back mount arm. You can affix the back-mount arm via using the provided KA2.5x20mm screws or double-sided tape.



Tips: We suggest you choose the second method (using screws to affix the back-mount arm) would be more stable.

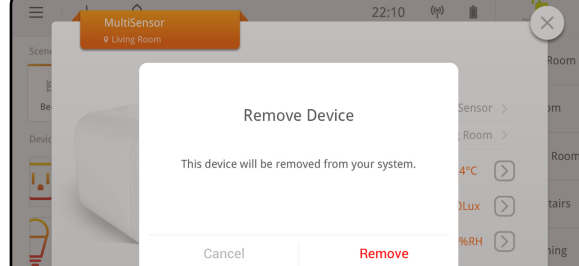
- After you have completed the affixing of back-mount arm, you will need to lock the MultiSensor to the back-mount arm via turning the MultiSensor.

- The back-mount arm may be locked at various angles by turning the friction lock clockwise and counter-clockwise to respectively tighten or loosen the angle of the arm.



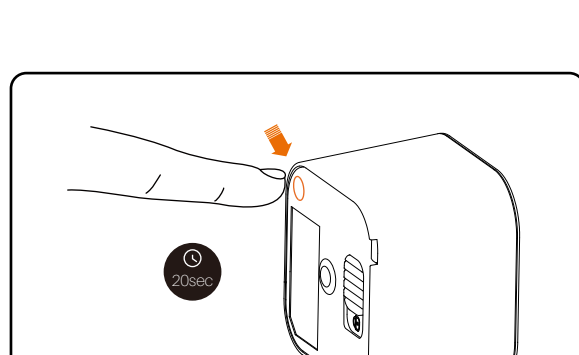
### 6 Removing your MultiSensor from Oomi System

From the device page on Oomi Touch, choose "Settings" and then "Remove this device from my system" and follow the on-screen instructions.



### 7 Resetting your MultiSensor

To restore all of MultiSensor's settings to their factory defaults, press and hold the action button for approximately 20 seconds. The LED will eventually rapidly flash red before returning to the rainbow sequence. Your MultiSensor will now be reset to its original settings.



## Technical Specifications

- Input:
  - USB: DC 5V 1A (not included)
  - Battery: 3V, 1500mAh CR123
- Operating temperature and humidity:
  - 0°C to 40°C / 32°F to 104°F
  - 8% to 80% RH
- Radio: Z-Wave Plus

## Warranty

If you are in need of any technical support during or subsequent to your products' warranty, please get in touch with our support team via <http://oomi.com/support>. The company you bought this product from has also guaranteed to assist you with any of your support needs.

Please refer to the Warranty and Safety Information card included with your device for additional information.



WARNING: RISK OF ELECTRIC SHOCK. Always disconnect power before installing and take necessary precautions.



This device complies with Part 15 of the FCC Rules. Operation is subject to the following two conditions.

- These devices may not cause harmful interference.
- These devices must accept any interference received, including interference that may cause undesired operation.

Hereby, Fantem Technologies (Shenzhen) Co., Ltd declares that the radio equipment type FT100-C MultiSensor is in compliance with Directive 2014/53/EU.

The full text of the EU declaration of conformity is available at the following internet address: [www.oomi.com/documents](http://www.oomi.com/documents).



oomi.com